

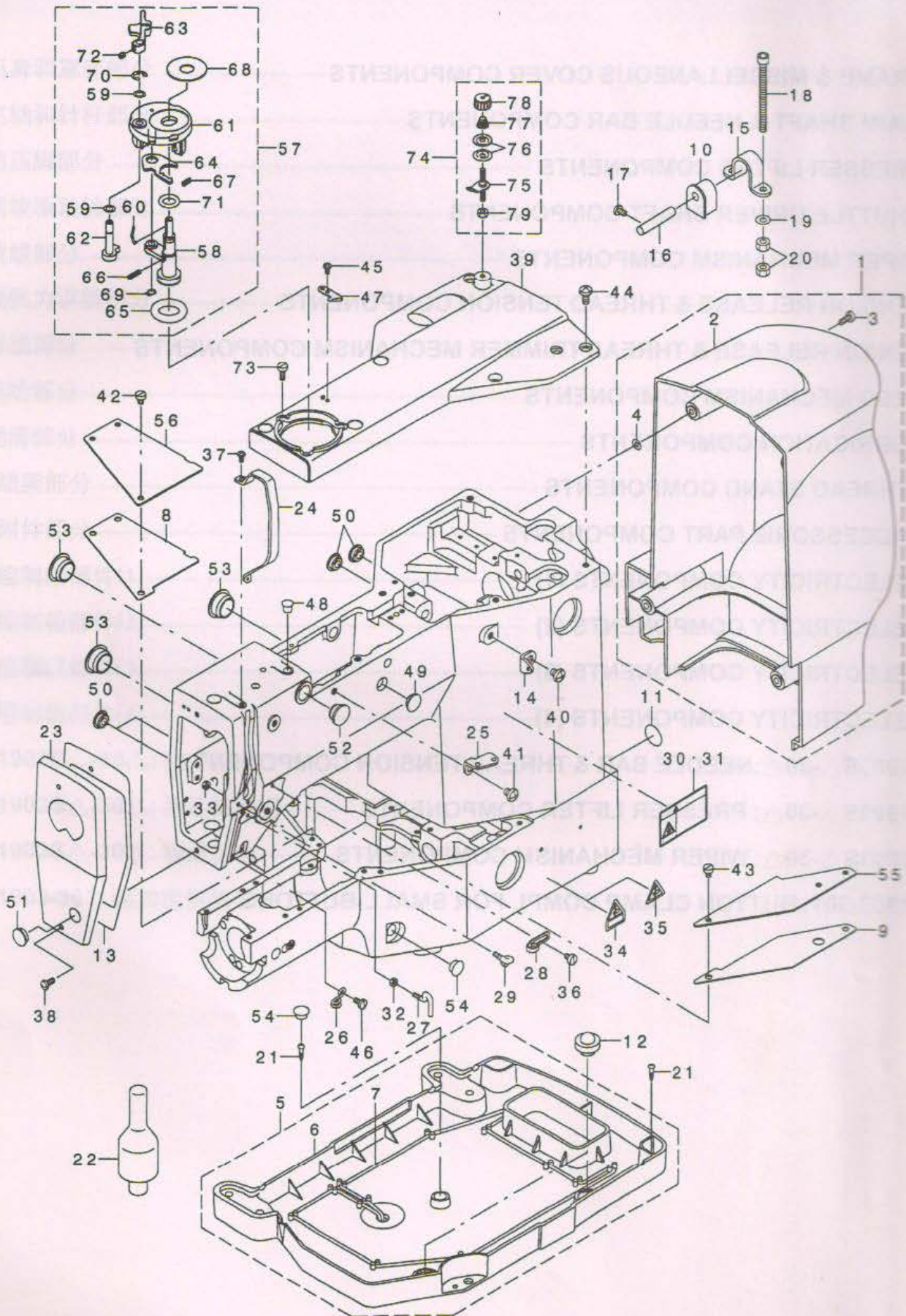
CONTENTS

1. FRAME & MISCELLANEOUS COVER COMPONENTS	1
2. MAIN SHAFT & NEEDLE BAR COMPONENTS	7
3. PRESSER LIFTER COMPONENTS	13
4. SHUTTLE DRIVER SHAFT COMPONENTS	15
5. WIPER MECHANISM COMPONENTS	17
6. TENSION RELEASE & THREAD TENSION COMPONENTS	18
7. TENSION RELEASE & THREAD TRIMMER MECHANISM COMPONENTS	19
8. FEED MECHANISM COMPONENTS	21
9. LUBRICATION COMPONENTS	23
10. THREAD STAND COMPONENTS	27
11. ACCESSORIE PART COMPONENTS	28
12. ELECTRICITY COMPONENTS (1)	30
13. ELECTRICITY COMPONENTS (2)	31
14. ELECTRICITY COMPONENTS (3)	32
15. ELECTRICITY COMPONENTS (4)	33
16. 1903S△-30△: NEEDLE BAR & THREAD TENSION COMPONENTS	34
17. 1903S△-30△: PRESSER LIFTER COMPONENTS	34
18. 1903S△-30△: WIPER MECHANISM COMPONENTS	34
19. 1903-301: BUTTON CLAMP COMPL FOR SMALL-BUTTONS	36

目 录

1. 机身和罩壳部分
2. 主轴和针杆部分
3. 抬压脚部分
4. 摆梭驱动轴部分
5. 拔线部分
6. 线张力调整部分
7. 剪线部分
8. 进给部分
9. 润滑部分
10. 线架部分
11. 附件部分
12. 控制箱部件(1)
13. 控制箱部件(2)
14. 控制箱部件(3)
15. 控制箱部件(4)
16. 1903S△-30△: 针杆部分
17. 1903S△-30△: 抬压脚部分
18. 1903S△-30△: 拔线部分
19. 1903-301: 钮扣定位部分

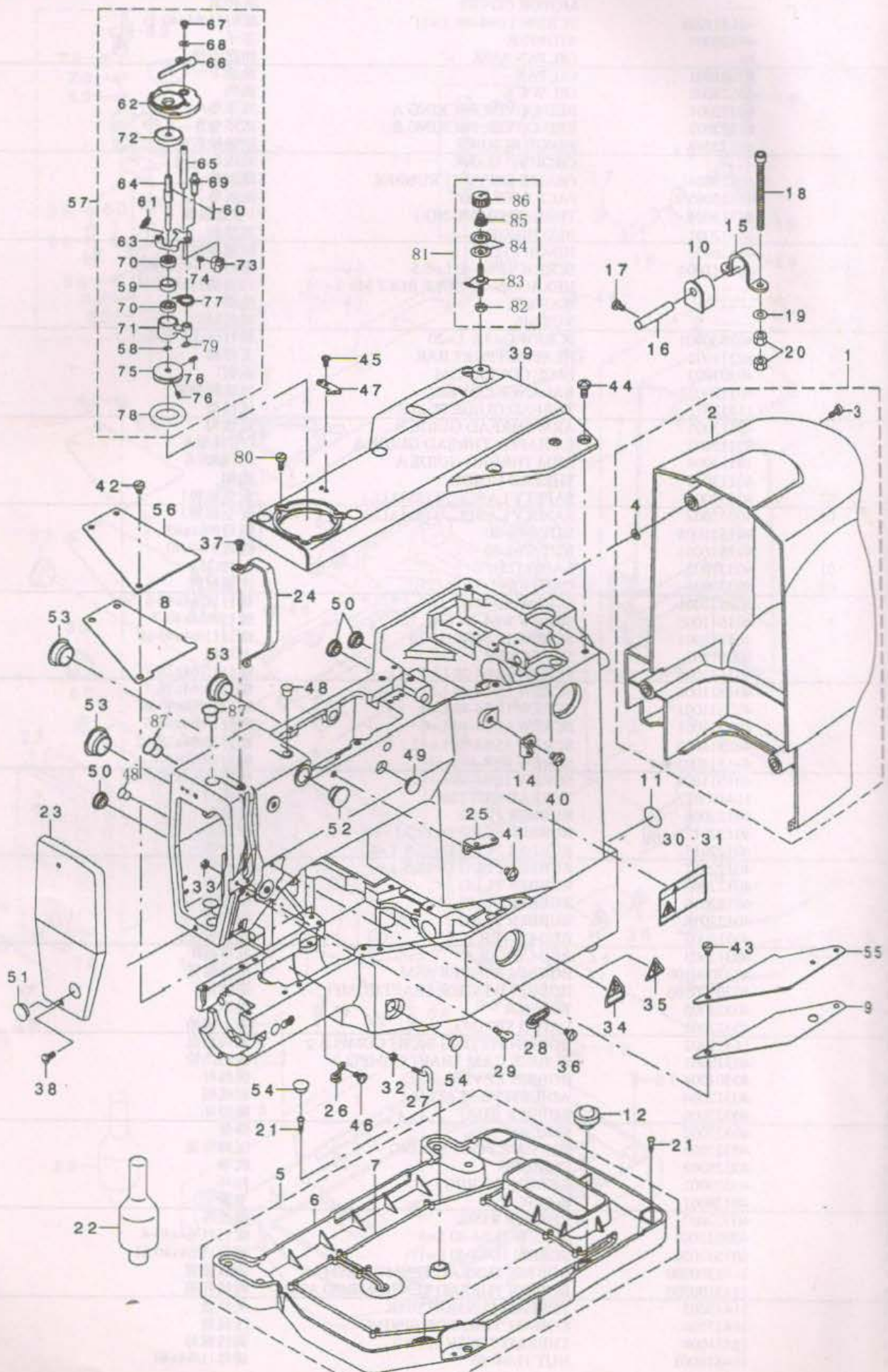
1. 机身和罩壳部分 / FRAME & MISCELLANEOUS COVER COMPONENTS



序号	注解	公司件号	DESCRIPTION	零件名称	用量
1		-----	MOTOR COVER ASM.	电动装置防护罩	1
2		-----	MOTOR COVER	防护罩	1
3		401S11026	SCREW 11/64-40 L=11	螺钉11/64x40-11	4
4		40328001	STOPPER	塞子	4
5		-----	OIL PAN ASM.	油盘组件	1
6		40301001	OIL PAN	油盘	1
7		40123002	OIL WICK	油绳	1
8		40322001	BED COVER PACKING A	底罩垫A	1
9		40322002	BED COVER PACKING B	底罩垫B	1
10		40322003	HINGE RUBBER	铰链橡胶座	2
11		-----	GROUND MARK	地线标记圈	2
12		40322004	FRAME SUPPORT RUBBER	橡胶垫	2
13		40322005	FACE PACKING	面板垫	1
14		40313001	THREAD GUIDE NO.1	1号过线板	1
15		40312001	BED HINGE	铰接板	2
16		40326001	HINGE STUD	铰链螺柱	2
17	*	401S11004	SCREW 11/64-40 L=6.5	螺钉11/64x40-6.5	2
18		-----	HEXAGONAL-HOLE BOLT M6 L=75	六角螺钉M6	4
19		-----	WASHER	垫圈	4
20		-----	NUT M6	螺母M6	8
21		403S30001	SCREW D=3.8 L=20	螺钉D=3.8 L=6.5	4
22	*	40311002	HEAD SUPPORT BAR	支撑棒	1
23	*	40301002	FACE COVER ASM.	面板	1
24		40112002	BALANCE COVER	挑线防护罩	1
25		11412011	THREAD GUIDE PLATE	过线架	1
26		40113005	ARM THREAD GUIDE B	过线勾	1
27		40113002	L-SHAPED THREAD GUIDE A	L型线架A	1
28		10113004	ARM THREAD GUIDE A	牵线架	1
29		40113001	THREAD GUIDE	线架	1
30	01	40337001	SAFETY LABEL., 1 (SMALL).	安全标牌1	1
31	02	40337002	SAFETY LABEL., 3 (SMALL).	安全标牌3	1
32		401S16001	NUT 9/64-40	螺母9/64x40	1
33		401S16001	NUT 9/64-40	螺母9/64x40	1
34	01	40337003	LABEL(25).	标牌(25)	1
35	03	40337004	CAUTION LABEL(25)	注意标牌	1
36		403S11001	SCREW 11/64-40 L=6	螺钉11/64x40-6	1
37	*	401S11003	SCREW 9/64-40 L=7	螺钉9/64x40-7	2
38		401S11001	SCREW 11/64-40 L=10	螺钉11/64x40-10	2
39		40301003	TOP COVER	上罩板	1
40		401S11006	SCREW 15/64-28 L=7	螺钉15/64x28-7	1
41		401S11006	SCREW 15/64-28 L=7	螺钉15/64x28-7	1
42		403S11001	SCREW 11/64-40 L=6	螺钉11/64x40-6	3
43		403S11001	SCREW 11/64-40 L=6	螺钉15/64x40-6	2
44		403S11002	SCREW 15/64-28 L=12	螺钉15/64x28-12	6
45		401S11003	SCREW 9/64-40 L=7	螺钉9/64x40-7	1
46		401S11004	SCREW 11/64-40 L=7.8	螺钉11/64x40-7.8	1
47		11419001	THREAD CUTTER	剪线刀	1
48		40122006	RUBBER PLUG	橡胶塞	1
49		40122017	RUBBER PLUG D=12.5 L=4	橡胶塞	1
50		40122017	RUBBER PLUG D=12.5 L=4	橡胶塞	4
51		40122017	RUBBER PLUG D=12.5 L=4	橡胶塞	1
52		40122007	RUBBER PLUG	橡胶塞	1
53		40122015	RUBBER PLUG	橡胶塞	3
54		40122016	RUBBER PLUG	橡胶塞	2
55		40312002	BED COVER B	底罩板A	1
56		40312003	BED COVER A	底罩板B	1
57		4033000100	BOBBIN WINDER ASM.	绕线装置	1
58		4030400100	BOBBIN WINDER SHAFT COMPL.	绕线轴	1
59		40328002	WASHER	垫圈	1
60		40327001	LATCH SPRING	弹簧插销	1
61		11431002	BOBBIN FITTING BASIS COMPL.	调线底座	1
62		40310001	BOBBIN CAM SHAFT COMPL.	线轴凸轮	1
63		40301004	BOBBIN LEVER	绕线杆	1
64		40312004	ADJUSTING PLATE	调线板	1
65		40322006	RUBBER RING	橡胶环	1
66		40327002	SPRING	弹簧	1
67		40327003	PRESSUR FOOT SPRING	压脚弹簧	1
68		40328003	CUSHION	软垫	1
69		40329001	RETAINING RING	扣环	1
70		40129001	E-RING	卡簧	1
71		40322007	RUBBER RING	橡胶环	1
72		403S15001	SCREW 11/64-40 L=4	螺钉11/64x40-4	1
73		401S11026	SCREW 11/64-40 L=11	螺钉11/64x40-11	3
74		1141300200	BOBBIN THREAD TENSION ASM.	调线装置	1
75		1143100300	BOBBIN THREAD TENSION ROD ASM.	调线杆架	1
76		11413003	THREAD TENSION DISK	夹线盘	2
77		11427006	CONNECTING ROD SPRING	压线簧	1
78		11411004	THREAD TENSION NUT	调线螺母	1
79		114S16001	NUT 11/64-40	螺母11/64x40	1

1. 机身和罩壳部分 / FRAME & MISCELLANEOUS COVER COMPONENTS

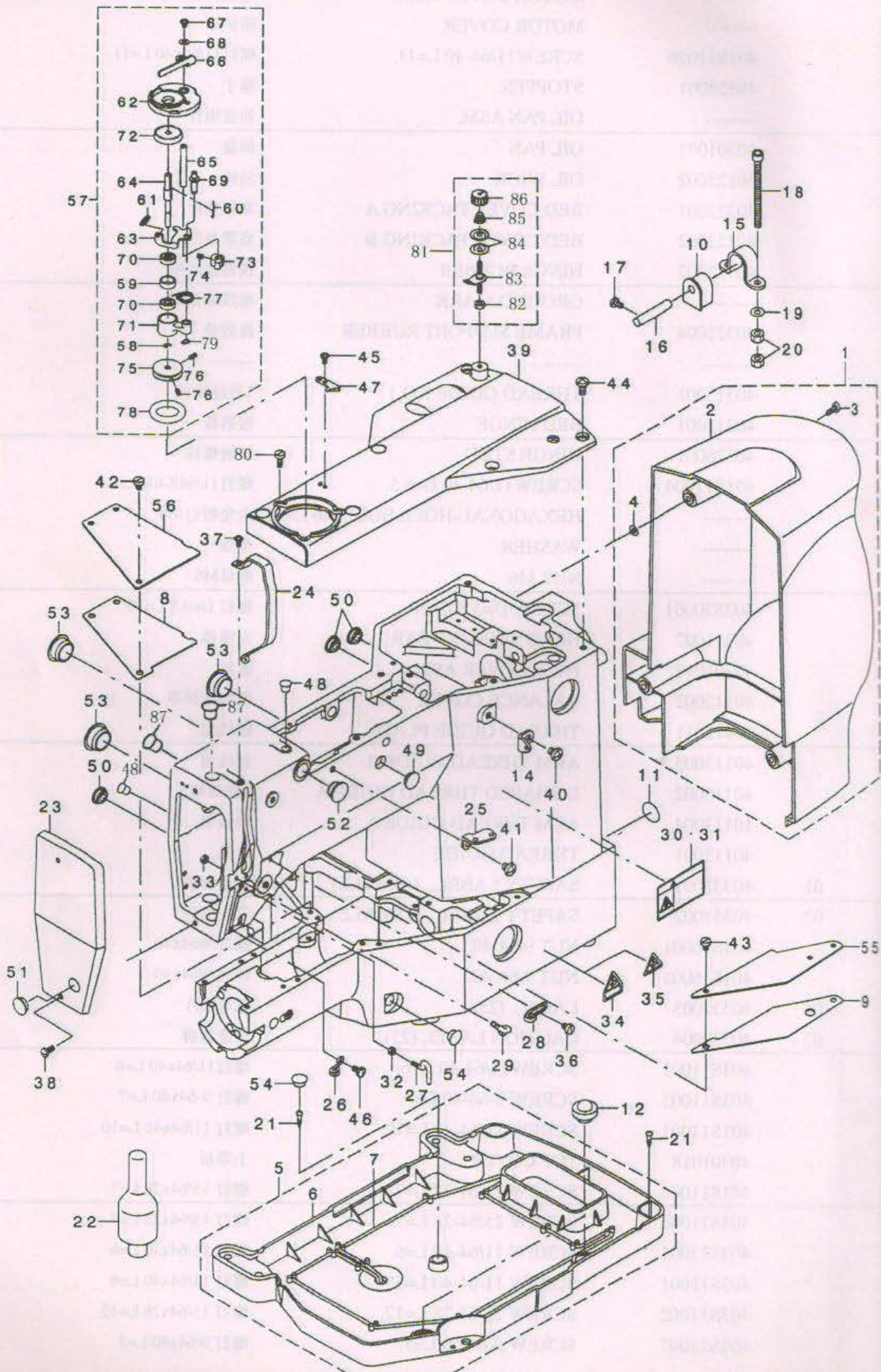
*适用于1900W(头部无油)系列产品 (1)



序号	注解	公司件号	DESCRIPTION	零件名称	用量
1		-----	MOTOR COVER ASM.	电动装置防护罩	1
2		-----	MOTOR COVER	防护罩	1
3		401S11026	SCREW11/64-40 L=11	螺钉11/64x40 L=11	4
4		40328001	STOPPER	塞子	4
5		-----	OIL PAN ASM.	油盘组件	1
6		40301001	OIL PAN	油盘	1
7		40123002	OIL WICK	油绳	1
8		40322001	BED COVER PACKING A	底座垫A	1
9		40322002	BED COVER PACKING B	底座垫B	1
10		40322003	HINGE RUBBER	铰链橡胶座	2
11		-----	GROUND MARK	地线标记圈	2
12		40322004	FRAME SUPPORT RUBBER	橡胶垫	2
13		-----	-----	-----	--
14		40313001	THREAD GOIDE NO.1	1号过线板	1
15		40312001	BED HINGE	铰链板	2
16		40326001	HINGE STUD	铰链螺柱	2
17		401S11004	SCREW11/64-40 L=6.5	螺钉11/64X40-6.5	2
18		-----	HEXAGONAL-HOLE BOLT M6 L=75	六角螺钉M6	4
19		-----	WASHER	垫圈	4
20		-----	NUT M6	螺母M6	8
21		403S30001	SCREW D=3.8 L=20	螺钉 D=3.8 L=20	4
22		40311002	HEAD SUPPORT BAR	支撑棒	1
23		40301017	FACE COVER ASM	面板	1
24		40112002	BALANCE COVER	挑线防护罩	1
25		11412011	THREAD GUIDE PLATE	过线架	1
26		40113005	ARM THREAD GUIDE B	过线勾	1
27		40113002	L-SHAPED THREAD GUIDE A	L型线架A	1
28		10113004	ARM THREAD GUIDE A	牵线架	1
29		40113001	THREAD GUIDE	线架	1
30	01	40337001	SAFETY LABEL., 1(SMALL)	安全标牌1	1
31	02	40337002	SAFETY LABEL., 3(SMALL)	安全标牌3	1
32		401S16001	NUT 9/64-40	螺母 9/64x40	1
33		401S16001	NUT 9/64-40	螺母 9/64x40	1
34	01	40337003	LABEL. (25)	标牌(25)	1
35	03	40337004	CAUTION LABEL (25)	注意标牌	1
36		403S11001	SCREW11/64-40 L=6.	螺钉11/64x40 L=6	1
37		403S11003	SCREW 9-64-40 L=7.	螺钉 9-64x40 L=7	2
38		401S11001	SCREW 11/64-40 L=10.	螺钉 11/64x40 L=10	2
39		40301018	TOP COVER	上罩板	1
40		401S11006	SCREW 15/64-28 L=7.	螺钉 15/64x28 L=7	1
41		401S11006	SCREW 15/64-28 L=7.	螺钉 15/64x28 L=7	1
42		403S11001	SCREW 11/64-40 L=6.	螺钉 11/64x40 L=6	3
43		403S11001	SCREW 11/64-40 L=6.	螺钉 11/64x40 L=6	2
44		403S11002	SCREW 15/64-28 L=12.	螺钉 15/64x28 L=12	6
45		401S11003	SCREW 9/64-40 L=7.	螺钉 9/64x40 L=7	1

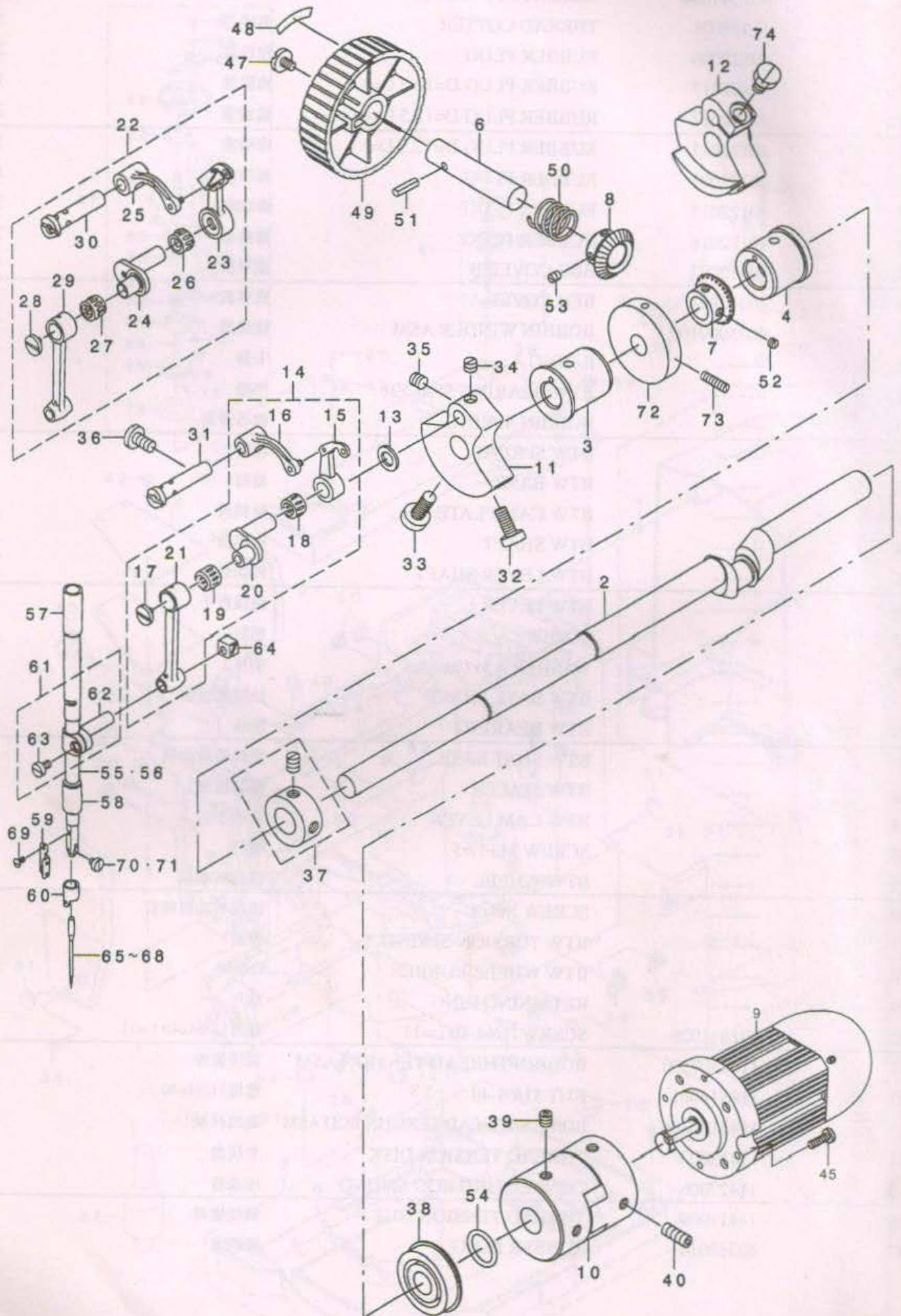
1. 机身和罩壳部分 / FRAME & MISCELLANEOUS COVER COMPONENTS

*适用于1900W(头部无油)系列产品 (2)



序号	注解	公司件号	DESCRIPTION	零件名称	用量
46		401S11004	SCREW 11/64-40 L=7.8	螺钉 11/64X40 L=7.8	1
47		11419001	THREAD COTTER	剪线刀	1
48		40122006	RUBBER PLUG	橡胶塞	2
49		40122017	RUBBER PLUG D=12.5 L=4	橡胶塞	1
50		40122017	RUBBER PLUG D=12.5 L=4	橡胶塞	3
51		40122017	RUBBER PLUG D=12.5 L=4	橡胶塞	1
52		40122007	RUBBER PLUG	橡胶塞	1
53		40122015	RUBBER PLUG	橡胶塞	3
54		40122016	RUBBER PLUG	橡胶塞	2
55		40312002	BED COVER B	底座板B	1
56		40312003	BED COVER A	底座板A	1
57		4033000100	BOBBIN WINDER ASM	绕线器	1
58		-----	E-RING 4	卡簧	1
59		-----	BTW BEARING SPACER	挡圈	1
60		-----	BOBBIN SPRING	梭芯弹簧	1
61		-----	BTW SPRING	弹簧	1
62		-----	BTW BASE	盖板	1
63		-----	BTW CAM PLATE	控制板	1
64		-----	BTW SHAFT	梭芯轴	1
65		-----	BTW LEVER SHAFT	转动轴	1
66		-----	BTW LEVER	绕线扳手	1
67		-----	SCREW	螺钉	1
68		-----	WASHER 4.5x10x0.8	垫片	1
69		-----	BTW BASE SHAFT	绕线定位轴	1
70		-----	BTW BEARING	轴承	2
71		-----	BTW SHAT BASE	绕线转动曲柄	1
72		-----	BTW SPACER	梭芯轴垫	1
73		-----	BTW CAM LEVER	转动卡头	1
74		-----	SCREW M5 L=5	螺钉	1
75		-----	BTW WHEEL	绕线转动板	1
76		-----	SCREW M4x8	绕线转动板螺钉	2
77		-----	BTW TORSION SPRING	弹簧	1
78		-----	BTW WHEEL RUBBER	O形圈	1
79		-----	RETAINING RING	垫片	1
80		401S11026	SCREW 11/64-40 L=11	螺钉 11/64x40 L=11	3
81		1141300200	BOBBIN THREAD TENSION ASM	调线装置	1
82		114S16001	NUT 11/64-40	螺母 11/64x40	1
83		1143100300	BOBBIN THREAD TENSION ROD ASM	调线杆架	1
84		11413003	THREAD TENSION DISK	夹线盘	2
85		11427006	CONNECTING ROD SPRING	压线簧	1
86		11411004	THREAD TENSION NUT	调线螺母	1
87		40322014	RUBBER PLUG	橡胶塞	2

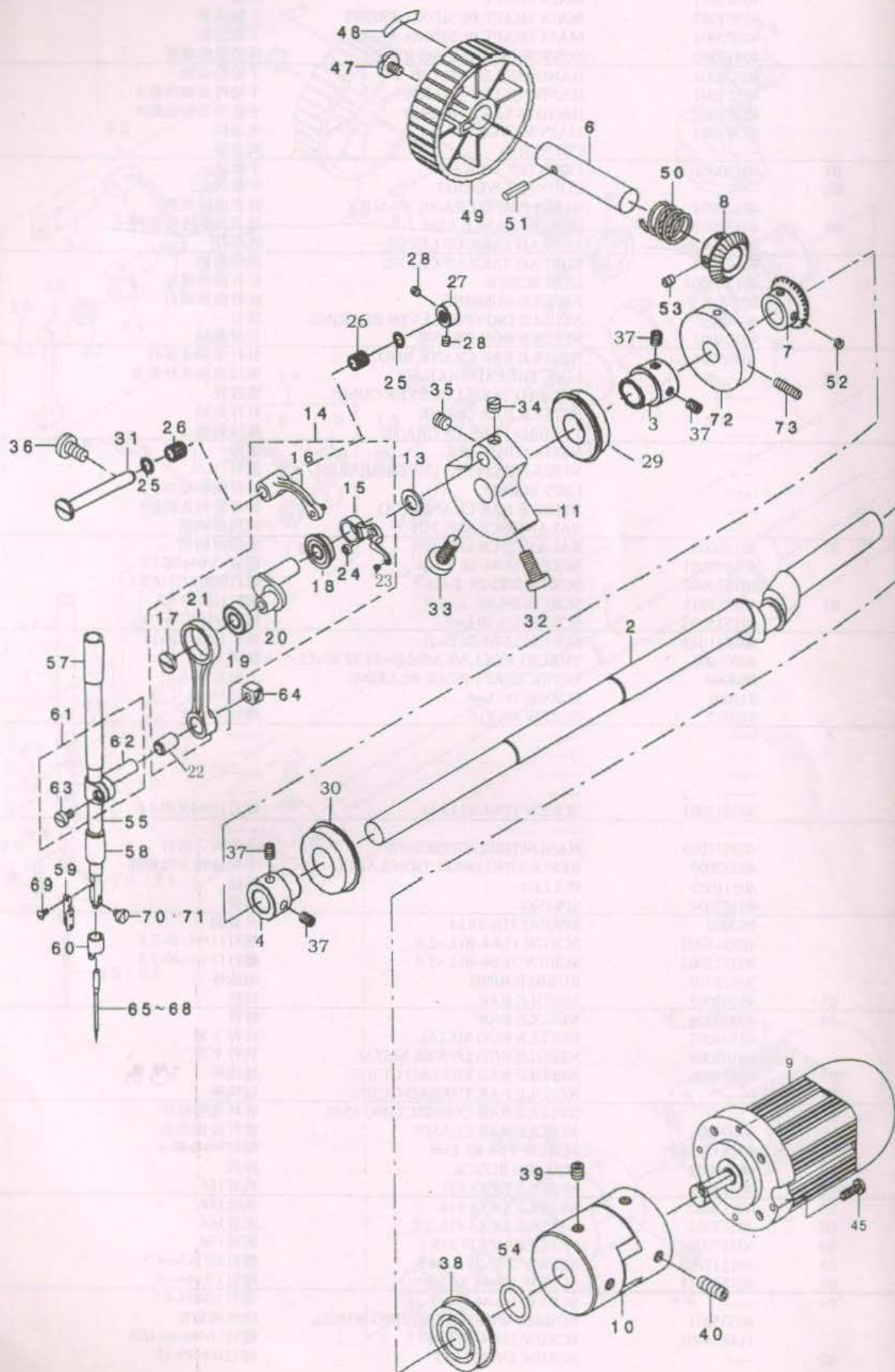
2. 主轴和针杆部分 / MAIN SHAFT & NEEDLE BAR COMPONENTS




序号	注解	公司件号	DESCRIPTION	零件名称	用量
1		40312005	MAIN SHAFT SLIT PLATE	上轴裂状金属板	1
2		40302001	MAIN SHAFT	上轴	1
3		40303003	MAIN SHAFT BUSHING, FRONT	上轴前套	1
4		40303004	MAIN SHAFT BUSHING, MIDDLE	下轴后套	1
5		40312006	SENSOR INSTALLING BASE	传感器底座板	1
6		40326004	HAND PULLEY SHAFT	手轮传动轴	1
7		40325001	HAND PULLEY GEAR A	手轮传动轴齿轮A	1
8		40325002	HAND PULLEY GEAR B	手轮传动轴齿轮B	1
9		40333001	MAIN MOTOR	电动机	1
10		-----	COUPLING	离合器	1
11	01	40110001	COUNTER WEIGHT	平衡块	1
12	02	-----	COUNTER WEIGHT	平衡块	1
13		40128003	NEEDLE ROD CRANK WASHER	针杆曲柄垫圈	1
14	01	4013800100	LINK BALANCE ASM	挑线曲柄连接组件	1
15		4013800200	THREAD TAKE-UP LEVER	挑线杆	1
16		40105002	THREAD TAKE-UP CRANK	挑线曲柄	1
17		401S30004	LEFT SCREW	针杆曲柄螺钉	1
18		B07003	NEEDLE BUSHING	针杆曲柄螺钉	1
19		B07002	NEEDLE DRIVING LEVER BEARING	滚针	1
20		40104001	NEEDLE ROD CRANK	针杆曲柄	1
21		40105001	NEEDLE BAR CRANK ROD	针杆曲柄连接杆	1
22	02	-----	LINK THREAD TAKE-UP	挑线曲柄连杆装置	1
23		-----	THREAD TAKE-UP LEVER COMPL.	挑线杆	1
24		-----	NEEDLE BAR CRANK	针杆曲柄	1
25		-----	THREAD TAKE-UP CRANK	挑线曲柄	1
26		-----	NEEDLE BUSHING	滚针	1
27		-----	NEEDLE DRIVING LEVER BEARING	滚针	1
28		-----	LEFT SCREW	针杆曲柄螺钉	1
29		-----	NEEDLE BAR CRANK ROD	针杆曲柄连接杆	1
30		-----	BALANCE CRANK PIN	挑线曲柄销	1
31	01	40126003	BALANCE CRANK PIN	挑线曲柄销	1
32		401S13001	SCREW 15/64-28 L=14	螺钉15/64x28-14	1
33		401S13002	SCREW 9/32-28 L=16.5	螺钉9/32x28-16.5	1
34	01	401S11011	SCREW 1/4-40 L=4.5	螺钉1/4x40-4.5	1
35		401S15002	SCREW 1/4-40 L=6	螺钉1/4x40-6	1
36		401S11013	SCREW 15/64-28 L=11	螺钉15/64x28-11	1
37		40308001	THRUST COLLAR ASM.D=14.72 W=12	紧圈	1
38		B03004	UPPER SHAFT REAR BEARING	上轴后轴承	1
39		S11001	SCREW M6 L=6	螺钉M6-6	2
40		S10012	SCREW M6X16	螺钉M6-16	2
41	*	-----	-----	-----	--
42		-----	-----	-----	--
43		-----	-----	-----	--
44		-----	-----	-----	--
45		305S11001	SCREW 11/64-40 L=14	螺钉11/64X40-14	4
46		-----	-----	-----	--
47		403S11003	HANDWHEEL SETSCREW	手轮固定螺钉	1
48		40337005	REVOLVING DIRECTION LABEL	手轮旋转方向标牌	1
49		40311003	PULLEY	手轮	1
50		40327004	SPRING	弹簧	1
51		P03002	SPRING PIN 4X14	弹簧销	1
52		403S15002	SCREW 11/64-40 L=2.8	螺钉11/64x40-2.8	2
53		403S15002	SCREW 11/64-40 L=2.8	螺钉11/64x40-2.8	2
54		30522010	RUBBER RING	橡胶环	1
55	03	40102002	NEEDLE BAR	针杆	1
56	04	40303004 X	NEEDLE BAR	针杆	1
57		40103007	NEEDLE ROD METAL	针杆上套	1
58		40103008	NEEDLE ROD LOWER METAL	针杆下套	1
59	03	40113006	NEEDLE BAR THREAD GUIDE	过线环	1
60	01	-----	NEEDLE BAR THREAD GUIDE	过线环	1
61		-----	NEEDLE BAR CONNECTING ASM.	针杆连接组件	1
62		40104002	NEEDLE BAR CLAMP	针杆连接夹头	1
63		401S11014	SCREW 9/64-40 L=6	螺钉9/64x40-6	1
64		40109002	SQUARE BLOCK	滑块	1
65	02	40317001	NEEDLE DPX5 #11	机针11#	1
66	05	40317002	NEEDLE DPX5 #14	机针14#	1
67	06	40117001	NEEDLE DPX5 #16	机针16#	1
68	04	40317004	NEEDLE DPX17 #19	机针19#	1
69	03	401S17005	SCREW 3/32-56 L=4.5	螺钉3/32x56-4.5	1
70	03	401S11015	SCREW 1/8-44 L=2.9	螺钉1/8x44-2.9	1
71	04	-----	SCREW 1/8-44 L=4.5	螺钉1/8x44-4.5	1
72		40335001	BOBBIN WINDER DRIVING WHEEL	绕线筒转轮	1
73		114S14001	SCREW 11/64-40 L=15.5	螺钉11/64x40-15.5	2
74	02	-----	SCREW 1/4-40 L=12	螺钉1/4x40-12	1
75	*	-----	-----	-----	--

2. 主轴和针杆部分 / MAIN SHAFT & NEEDLE BAR COMPONENTS

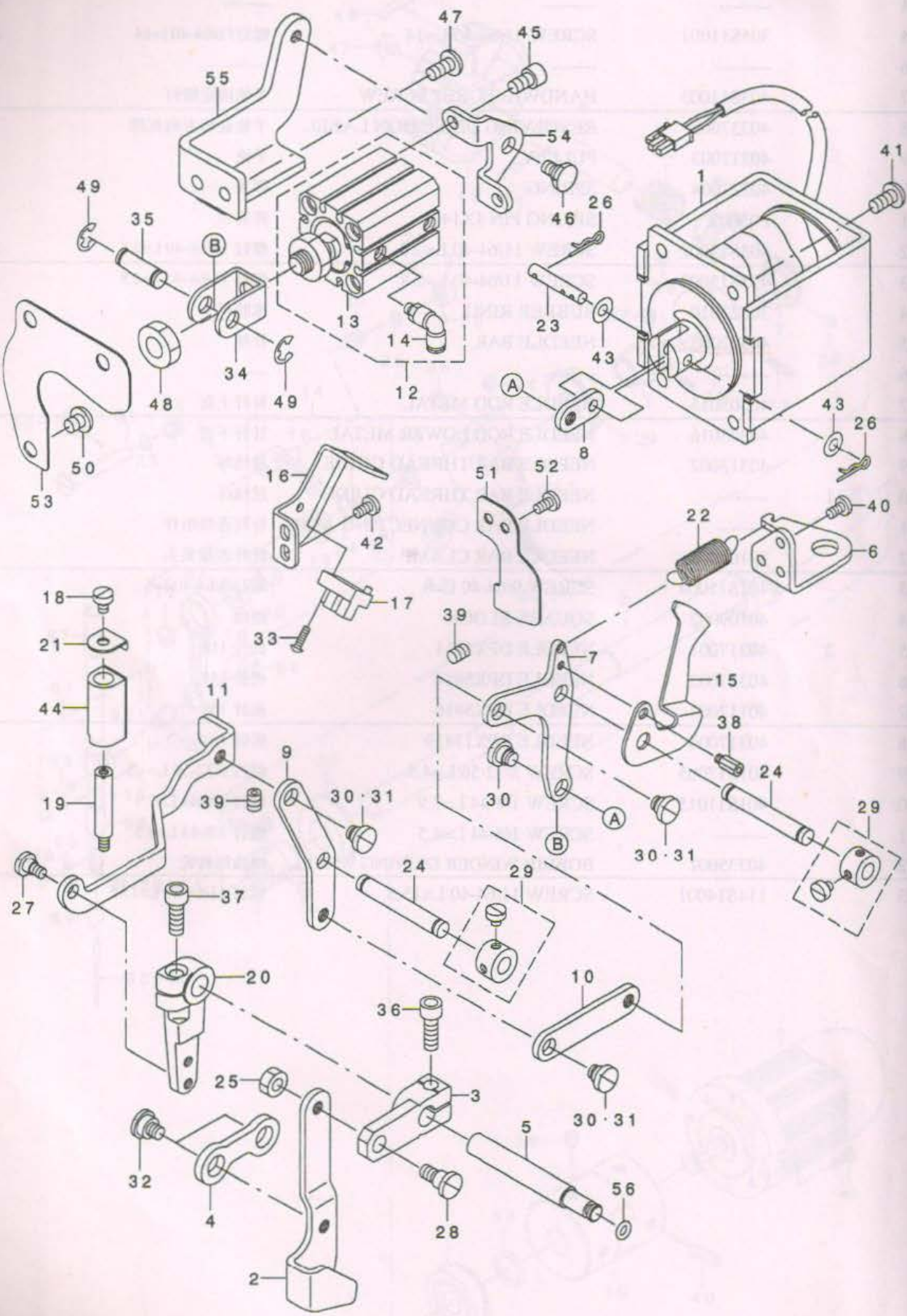
*适用于1900W(头部无油)系列产品(1)



序号	注解	公司件号	DESCRIPTION	零件名称	用量
1		-----	-----	-----	--
2		40302001	MAIN SHAFT	上轴	1
3		40303008	MAIN SHAFT BUSHING.FRONT	上轴前轴承套	1
4		40303011	MAIN SHAFT BUSHING.MIDDLE	上轴中轴承套	1
5		-----	-----	-----	--
6		40326004	HAND PULLEY SHAFT	手轮传动轴	1
7		40325001	HAND PULLEY GEAR A	手轮传动轴齿轮A	1
8		40325002	HAND PULLEY GEAR B	手轮传动轴齿轮B	1
9		40333001	MAIN MOTOR	电动机	1
10		-----	COUPLING	离合器	1
11		40310004	COUNTER WEIGHT	平衡块	1
12		-----	-----	-----	--
13		40328017	NEEDLE ROD CRANK WASHER	针杆曲柄垫圈	1
14		4033800200	LINK BALANEC ASM.	挑线曲柄连接组件	1
15		40338003	THREAD TAKE-UP LEVER	挑线杆	1
16		40305012	THREAD TAKE-UP CRANK	挑线曲柄	1
17		403S30011	LEFT SCREW	螺钉	1
18		40324005	NEEDLE BUSHING	轴承	1
19		40324007	NEEDLE BUSHING	连杆轴承	1
20		40304008	NEEDLE ROD CRANK	针杆曲柄	1
21		40305011	NEEDLE BAR CRANK ROD	针杆曲柄连接连杆	1
22		40303014		连杆套	1
23		40313008		过线管	1
24		40324006	NEEDLE BUSHING	轴承	1
25		40322025	WASHER	封油垫片	2
26		40324008	NEEDLE DRIVING LEVER BEARING	滚针轴承	2
27		40308007	THEUST COLLAR ASM	紧圈	1
28		403S14007	SCREW	挡圈螺钉	2
29		40324006	BEARING	上轴轴承(前)	1
30		40324003	BEARING	上轴轴承(后)	1
31		40326013	BALANCE CRANK PIN	挑线曲柄销	1
32		401S13001	SCREW 15/64-28 L=14	螺钉15/64-28 l=14	1
33		401S13002	SCREW 9/32-28 L=16.5	螺钉9/32-28 l=16.5	1
34		401S11011	SCREW 1/4-40 L=4.5	螺钉 1/4-40 l=4.5	1
35		401S15002	SCREW 1/4-40 L=6	螺钉 1/4-40 l=6	1
36		403S13010	SCREW M6 L=12	螺钉 M6 L=12	1
37		403S14005	SCREW M6 L=8	螺钉M6 L=8	4
38		B03004	UPPER SHAFT REAR BEARING	上轴后轴承	1
39		S11001	SCREW M6 L=6	螺钉 M6 L=6	2
40		S10012	SCREW M6 L=16	螺钉 M6 L=16	2
41		-----	-----	-----	--
42		-----	-----	-----	--

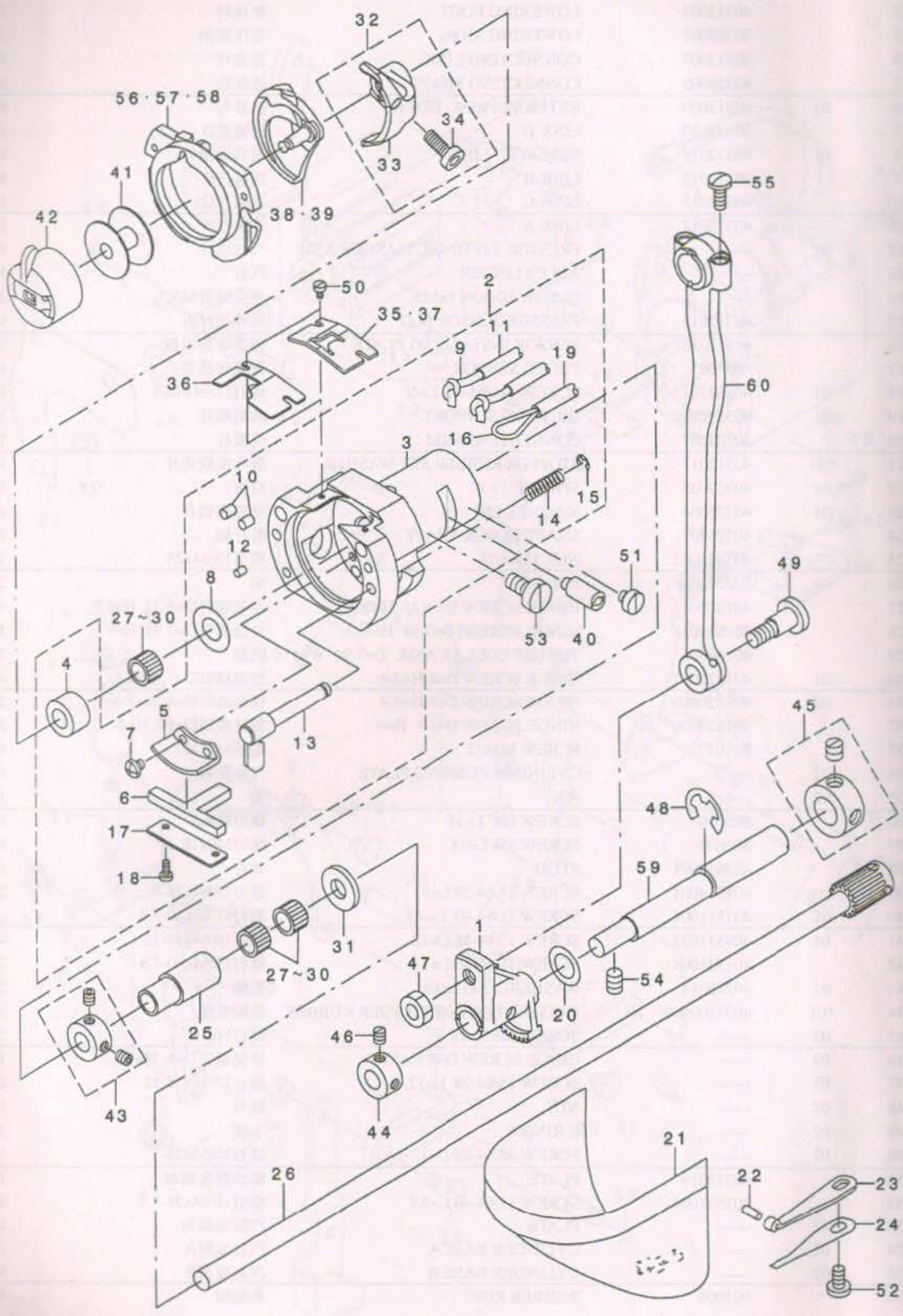
序号	注解	公司件号	DESCRIPTION	零件名称	用量
43		-----	-----	-----	--
44		-----	-----	-----	--
45		305S11001	SCREW 11/64-40 L=14	螺钉11/64-40 L=14	4
46		-----	-----	-----	--
47		403S11003	HANDWHEEL SET SCREW	手轮固定螺钉	1
48		40337005	REVOLVING DIRECTION LABEL	手轮旋转方向标牌	1
49		40311003	PULLEY	手轮	1
50		40327004	SPRING	弹簧	1
51		P03002	SPRING PIN 4X14	弹簧销	1
52		403S15002	SCREW 11/64-40 L=2.8	螺钉 11/64-40 L=2.8	2
53		403S15002	SCREW 11/64-40 L=2.8	螺钉 11/64-40 L=2.8	2
54		30522010	RUBBER RING	橡胶环	1
55		<u>40302008</u> *	NEEDLE BAR	针杆	1
56		-----	-----	-----	--
57		40303015	NEEDLE ROD METAL	针杆上套	1
58		40303016	NEEDLE ROD LOWER METAL	针杆下套	1
59		40313002	NEEDLE BAR THREAD GUIDE	过线环	1
60	1	-----	NEEDLE BAR THREAD GUIDE	过线环	1
61		-----	NEEDLE BAR CONNECTING ASM.	针杆连接组件	1
62		40104002	NEEDLE BAR CLAMP	针杆连接夹头	1
63		401S11004	SCREW 9/64-40 L=6	螺钉 9/64-40 L=6	1
64		40109002	SQUARE BLOCK	滑块	1
65	2	40317001	NEEDLE DPX5#11	机针 11#	1
66		40317002	NEEDLE DPX5#14	机针 14#	1
67		40117001	NEEDLE DPX5#16	机针 16#	1
68		40317004	NEEDLE DPX17#19	机针 19#	1
69		401S17005	SCREW 3/32-56 L=4.5	螺钉 3/32-56 L=4.5	1
70		401S11015	SCREW 1/8-44 L=2.9	螺钉 1/8-44 L=2.9	1
71		-----	SCREW 1/8-44 L=4.5	螺钉 1/8-44 L=4.5	1
72		40335001	BOBBIN WINDER DRIVING WHEEL	绕线筒转轮	1
73		114S14001	SCREW 11/64-40 L=15.5	螺钉 11/64-40 L=15.5	2

3. 拾压脚部分 / PRESSER LIFTER COMPONENTS



序号	注解	公司件号	DESCRIPTION	零件名称	用量
1	01	40330004	PRESSER LIFTING SOLENOID ASM.	压杆提升装置螺线管组件	1
2		40312007	LOWERING FOOT	松压杆	1
3		40305001	LOWERING ARM	松压曲柄	1
4		40312008	CONNECTING LINK	连接杆	1
5		40326005	CONNECTING SHAFT	连接轴	1
6	01	40312009	RETURN SPRING HOOK	拉簧勾	1
7		40312010	LINK D	连接板D	1
8	01	40312011	SOLENOID LINK	螺线连接杆	1
9		40312012	LINK B	连接杆B	1
10		40312013	LINK C	连接杆C	1
11		40312014	LINK A	连接杆A	1
12	02	-----	PRESSER LIFTING CYLINDER ASM.	气缸组件	1
13		-----	AIR CYLINDER	汽缸	1
14		-----	ELBOW UNION 6xM5	弯头螺管M5	2
15		40312015	PRESSER SENSOR SLIT	传动压杆板	1
16		40312016	SENSOR INSTALLING PLATE	传感器装置板	1
17		4033005	PHOTO SENSOR	视频传感器	1
18	01	403S1101	SCREW 11/64-40 L=6	螺钉11/64x40-6	1
19	01	403S30002	OIL PUMP SUPPORT	油泵螺柱	1
20		40105007	CONNECTING ARM	连接杆	1
21	*01	40312017	STOPPER RUBBER SET WASHER	缓冲橡胶垫片	1
22	01	40327005	SPRING	拉簧	1
23	01	40326006	MAGNET PIN	电磁铜销杆	1
24		40326007	SHAFT BLOCK SHAFT	番杆轴	2
25		401S16002	NUT 15/64-28	螺母15/64x28	1
26	01	30527009	PIN	销	2
27		401S20014	HINGE SCREW D=6.35 H=3.9	铰链螺钉D=6.35, H=3.9	1
28		401S20010	HINGE SCREW D=7.94 H=6	铰链螺钉D=7.94, H=6	1
29		40108006	THRUST COLLAR ASM. D=7.94 W=1	挡圈	2
30	01	401S20002	HINGE SCREW D=8 H=3.4	铰链螺钉D=8, H=3.4	4
31	02	401S20003	HINGE SCREW D=8 H=3.4	铰链螺钉D=8, H=3.4	3
32		401S20009	HINGE SCREW D=10 H=4	铰链螺钉D=10, H=4	2
33		S01027	SCREW M3x12	螺钉M3x12	1
34	02	----	CYLINDER PUSHING PLATE	气缸推板	1
35	02	----	PIN	销	1
36		S05030	SCREW M6 L=18	螺钉M6x8	1
37		S05030	SCREW M6 L=18	螺钉M6x18	1
38		403S13001	STUD	螺柱	1
39		401S14001	SCREW 15/64-28 L=8	螺钉15/64x28-8	2
40	01	401S11004	SCREW 11/64-40 L=7.8	螺钉11/64x40-7.8	2
41	01	409S11022	SCREW 15/64-28 L=12	螺钉15/64x28-12	4
42		401S11004	SCREW 11/64-40 L=7.8	螺钉11/64x40-7.8	2
43	01	40228014	WASHER 5.6x12x0.8	垫圈	2
44	*01	4032200900	PRESSER LIFTING STOPPER RUBBER	橡胶塞垫	1
45	02	-----	SCREW M6 L=16	螺钉M6-16	2
46	02	-----	HINGE SCREW D=8 H=3.2	铰链螺钉D=8, H=3.2	1
47	02	-----	SCREW 15/64-28 L=12	螺钉15/64x28-12	2
48	02	-----	NUT	螺母	1
49	02	-----	E-RING 6	卡簧	2
50	02	-----	SCREW 15/64-28 L=7	螺钉15/64x28-7	3
51		40312019	PLATE	螺线管金属板	1
52		401S11004	SCREW 11/64-40 L=7.8	螺钉15/64x28-7.8	2
53	02	-----	PLATE	汽缸金属板	1
54	02	-----	CYLINDER BASE A	汽缸底板A	1
55	02	-----	CYLINDER BASE B	汽缸底板B	1
56	*	001004	RUBBER RING	橡胶圈	1

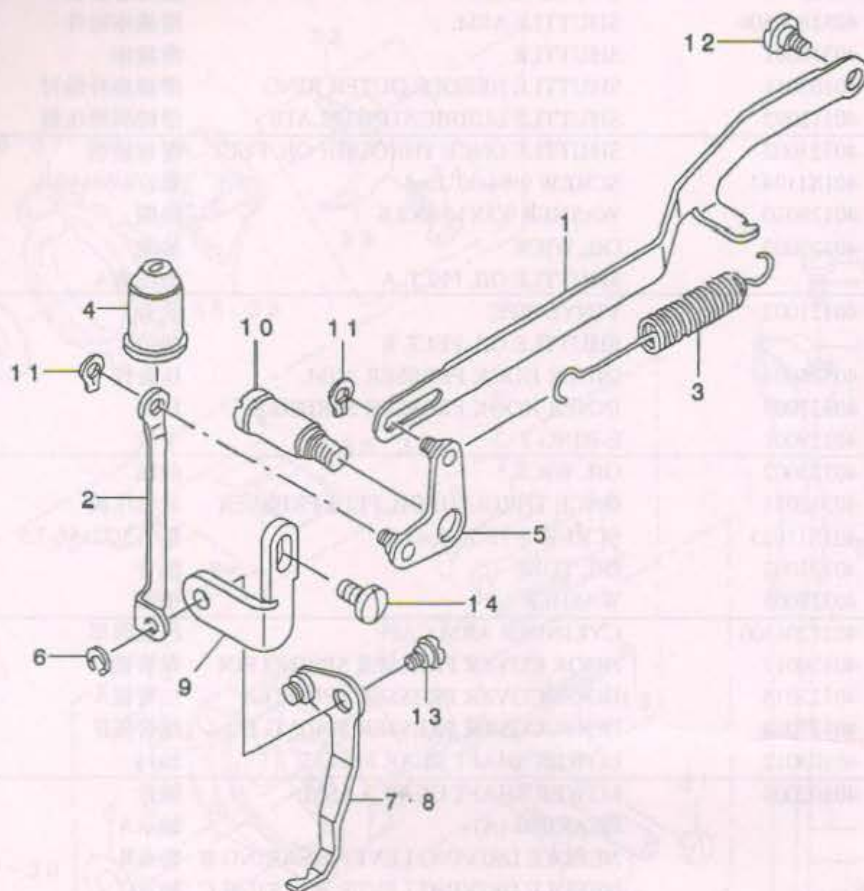
4. 摆梭驱动轴部分 / SHUTTLE DRIVER SHAFT COMPONENTS





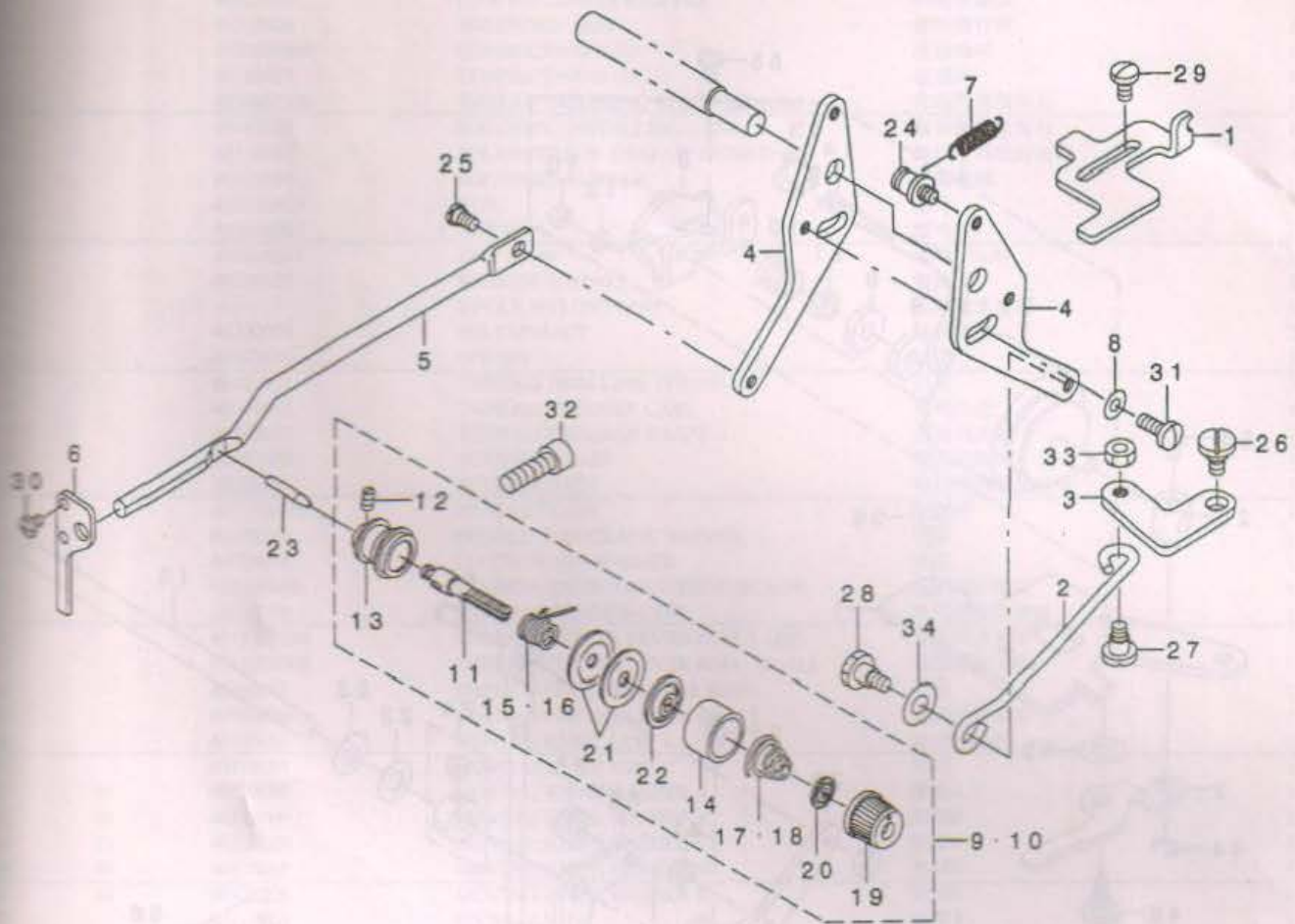
序号	注解	公司件号	DESCRIPTION	零件名称	用量
1		40325003	OSCILLATOR	震动器转轴	1
2	*	4031800500	SHUTTLE ASM.	滑梭座组件	1
3	*	40318001	SHUTTLE	滑梭座	1
4		40103011	SHUTTLE NEEDLE OUTER RING	滑梭座外轴衬	1
5		40112092	SHUTTLE LUBRICATING PLATE	滑梭润滑压板	1
6	*	40323002	SHUTTLE ONCE THROUGH OIL FELT	滑梭油毡	1
7	*	401S11042	SCREW 9/64-40 L=4	螺钉9/64x40-4	2
8		40128010	WASHER 9.5X14.8X2.6	垫圈	1
9	*	40123002	OIL WICK	油绳	1
10		-----	SHUTTLE OIL FELT. A	油毡塞A	2
11		40121002	VINYL PIPE	油管	1
12		-----	SHUTTLE OIL FELT, B	油毡B	1
13		40326008	INNER HOOK PRESSER ASM.	压簧柱	2
14		40327007	INNER HOOK PRESSER SPRING	压簧	2
15		40129001	E-RING 3	卡簧	2
16	*	40123002	OIL WICK	油绳	1
17	*	40312021	ONCE THROUGH OIL FELT PRESSER	油毡压板	1
18	*	401S11023	SCREW 3/32-56 L=3.5	螺钉3/32x56-3.5	2
19	*	40121002	OIL TUBE	油管	1
20		40328005	WASHER	垫圈	1
21		4011204300	CYLINDER ARM CAP	汽缸臂罩	1
22		40126017	HOOK COVER PRESSER SPRING PIN	弹簧销	1
23		40127015	HOOK COVER PRESSER SPRING A	压簧板A	1
24		40127014	HOOK COVER PRESSER SPRING B	压簧板B	1
25		40103012	LOWER SHAFT REAR METAL	轴衬	1
26		40102004	LOWER SHAFT GEAR A ASM.	轴衬	3
27	03	-----	BEARING (A)	轴承A	3
28	03	-----	NEEDLE DRIVING LEVER BEARING B	轴承B	3
29	03	-----	NEEDLE DRIVING LEVER BEARING C	轴承C	3
30	03	B07011	BEARING (D)	轴承D	1
31		40128011	LOWER SHAFT THRUST WASHER	垫圈	1
32		40118006	DRIVER ASM.	滑梭驱动部分	1
33		40118503	SHUTTLE DRIVER	滑梭驱动器	1
34		401S13005	SCREW 3/16-28 L=12.0	螺钉3/16x28-12	1
35	02	40127012	SHUTTLE UPPER SPRING	滑梭上部压簧板	1
36	01	-----	SHUTTLE UPPER SPRING (F TYPE)	F型滑梭上部压簧板	1
37	01	-----	AUXILIARY SHUTTLE RACE SPRING	滑梭空转辅助压簧板	1
38	04	40118501	INNER HOOK	滑梭钩	1
39	05	-----	SHUTTLE	滑梭心	1
40		40126015	SHUTTLE RACE ADJUSTING SHAFT	滑梭座紧固螺柱	1
41		40118004	BOBBIN	绕线筒	1
42		40118502	BOBBIN CASE ASM (RACING PREVER	绕线筒底架	1
43		40108005	THRUST COLLAR ASM. D=8.0 W=8	挡圈	1
44		40308002	THRUST COLLAR	挡圈	1
45		-----	THRUST COLLAR ASM. D=12 W=10	挡圈组件	1
46		305S14001	SCREW 11/64-40 L=4.5	螺钉11/64x40-4.5	2
47		401S16011	NUT 1/4-40	螺母1/4x40	1
48		H05011	E-RING 9	卡簧	1
49		401S12002	HINGE SCREW D=8 H=10.2	铰链螺钉D=8 H=10.2	1
50		401S11023	SCREW 3/32-56 L=3.5	螺钉11/32x56-3.5	2
51		401S11024	SCREW 11/64-40 L=4.3	螺钉11/64x40-4.3	1
52		401S11004	SCREW 11/64-40 L=7.8	螺钉15/64x40-7.8	1
53		401S11013	SCREW 15/64-28 L=11.5	螺钉15/64x28-11.5	1
54		401S14001	SCREW 15/64-28 L=8	螺钉15/64x28-8	2
55		401S11025	SCREW 11/64-40 L=10.5	螺钉11/64x40-10.5	2
56	05	40318004	SHUTTLE RACE RING ASM., C	滑梭环C	1
57	01	-----	INNER HOOK PRESSER ASM., A	滑梭环A	1
58	06	-----	INNER HOOK PRESSER ASM., B	滑梭环B	1
59		40302002	OSCILLATING ECCENTRIC SHAFT	震动器拉杆	1
60		4030500200	CRANK ROD	曲柄摇杆	1

5. 拨线部分 / WIPER MECHANISM COMPONENTS



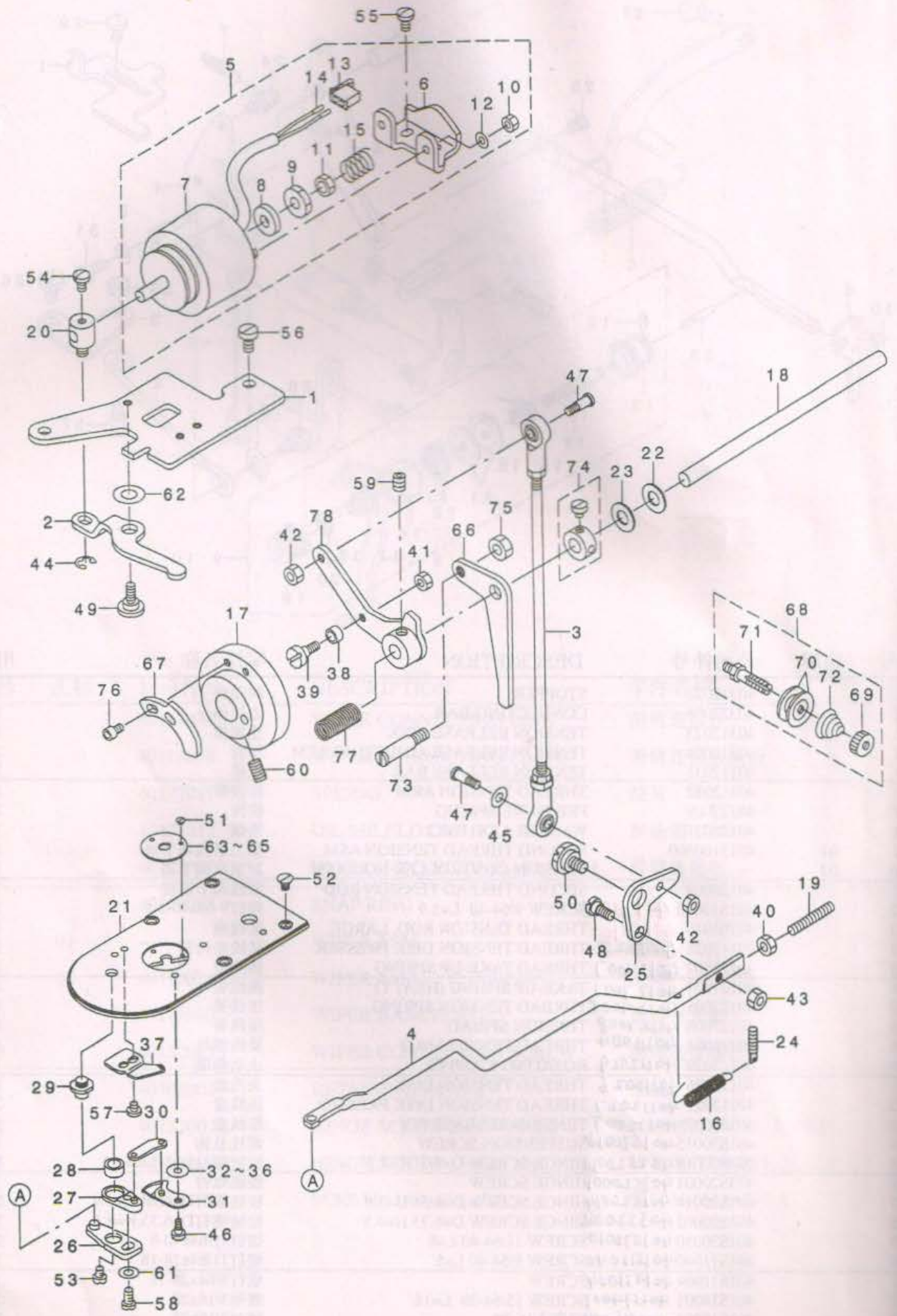
序号	注解	公司件号	DESCRIPTION	零件名称	用量
1		40112036	WIPER CONNECTING LINK	滑臂连接杆	1
2		40112039	WIPER CONNECTING PLATE	滑臂连接金属板	1
3		40127011	SPRING	拉簧	1
4		40122012	OIL SHIELD CAP	护油帽	1
5		4011203700	WIPER CONNECTING ARM ASM.	滑臂连接板	1
6		40108003	SNAP RING	卡簧	1
7	01	-----	WIPER ASM.	滑臂	1
8	02	4011202400	WIPER ASM.	滑臂	1
9		40112040	WIPER BASE PLATE	滑臂安装板	1
10		401S20015	WIPER CONNECTING SCREW	滑臂连接螺钉	1
11		40108002	RETAINING RING 4.7	卡簧	2
12		401S20011	HINGE SCREW D=5.3 H=2.2	铰链螺钉D=5.3, H=2.2	1
13		401S20016	HINGE SCREW D=6.35 H=2.1	铰链螺钉D=6.35, H=2.1	1
14		401S11004	SCREW 11/64-40 L=7.8	螺钉11/64x40-7.8	1

张力调整部分 / TENSION RELEASE & THREAD TENSION COMPONENTS



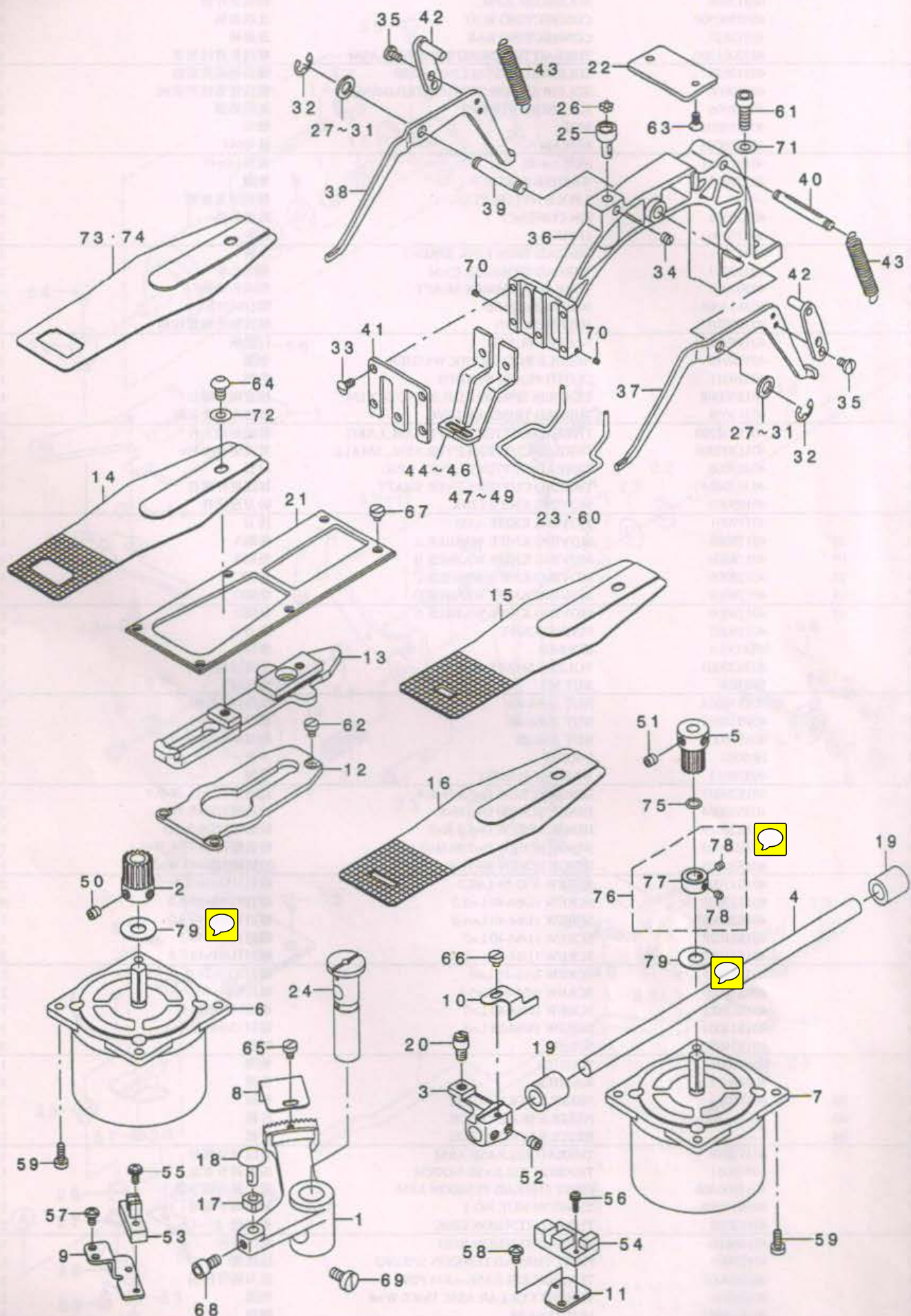
序号	注解	公司件号	DESCRIPTION	零件名称	用量
1		40312022	STOPPER	制动板	1
2		40327008	CONNECTING BAR	连接棒	1
3		40312023	TENSION RELEASE LINK	连接板	1
4		40312024	TENSION RELEASE ADJUSTING AEM	压板	2
5		40112031	TENSION RELEASE BAR	压棒	1
6		40112032	THREAD TENSION ARM	松线臂	1
7		40327009	PRESSURE SPRING	拉簧	1
8		40128021	WASHER 4.8X11.5X2	垫圈	1
9	01	4013100300	SECOND THREAD TENSION ASM.	第二紧线调节器	1
10	02	-----	TENSION CONTROLLER NO.2 ASM.	2#紧线调节器	1
11		40126009	SECOND THREAD TENSION ROD	紧线调节螺柱	1
12		401S15005 401S11005	SCREW 9/64-40 L=5.9	螺钉9-64x40-5.9	1
13		40103010 40103010	THREAD TENSION ROD, LARGE	紧线座	1
14		40112028 4012028	THREAD TENSION DISK PRESSER	紧线座衬筒	1
15		40127007 40127007	THREAD TAKE-UP SPRING	挑线簧	1
16		40127007 40127007	TAKE-UP SPRING (HEAVY)	跳线簧	1
17		40127008 40127008	THREAD TENSION SPRING	压线簧	1
18		40127008 40127008	TENSION SPRING	压线簧	1
19		40111004 40111004	THREAD TENSION NUT	紧线螺母	1
20		40112029 40112029	ROTATING STOPPER	止动垫圈	1
21		40112026 40112026	THREAD TENSION DISK	夹线盘	1
22		40112027 40112027	THREAD TENSION DISK PRESSER	压线盘	2
23		40126007 40126007	TENSION RELEASE PIN	松线盘	1
24		401S30015 401S30015	SUSPENSION SCREW	螺柱悬钩	1
25		402S20018 402S20018	HINGE SCREW D=5.3 H=2.2	铰链螺钉D=5.3 H=2.2	1
26		403S20001 403S20001	HINGE SCREW	铰链螺钉	1
27		401S20014 401S20014	HINGE SCREW D=6.35 H=3.9	铰链螺钉D=6.35.H=3.9	1
28		403S20002 403S20002	HINGE SCREW D=6.35 H=4.8	铰链螺钉D=6.35.H=4.5	1
29		401S30010 401S30010	SCREW 11/64-40 L=8	螺钉11/64x40-8	2
30		401S11040 401S11040	SCREW 9/64-40 L=5	螺钉11/64x28-18	2
31		401S11004 401S11004	SCREW	螺钉9/64x28-18	1
32		401S14001 401S14001	SCREW 15/64-28 L=18	螺母3/16x28	1
33		401S16004 401S16004	NUT 3/16-28	螺母3/16x28	1
34		40228014 40228014	WASHER 6.5X11X1	垫圈	1

7. 剪线部分 / TENION RELEASE & THREAD TRIMMER MECHANISM COMPONENTS



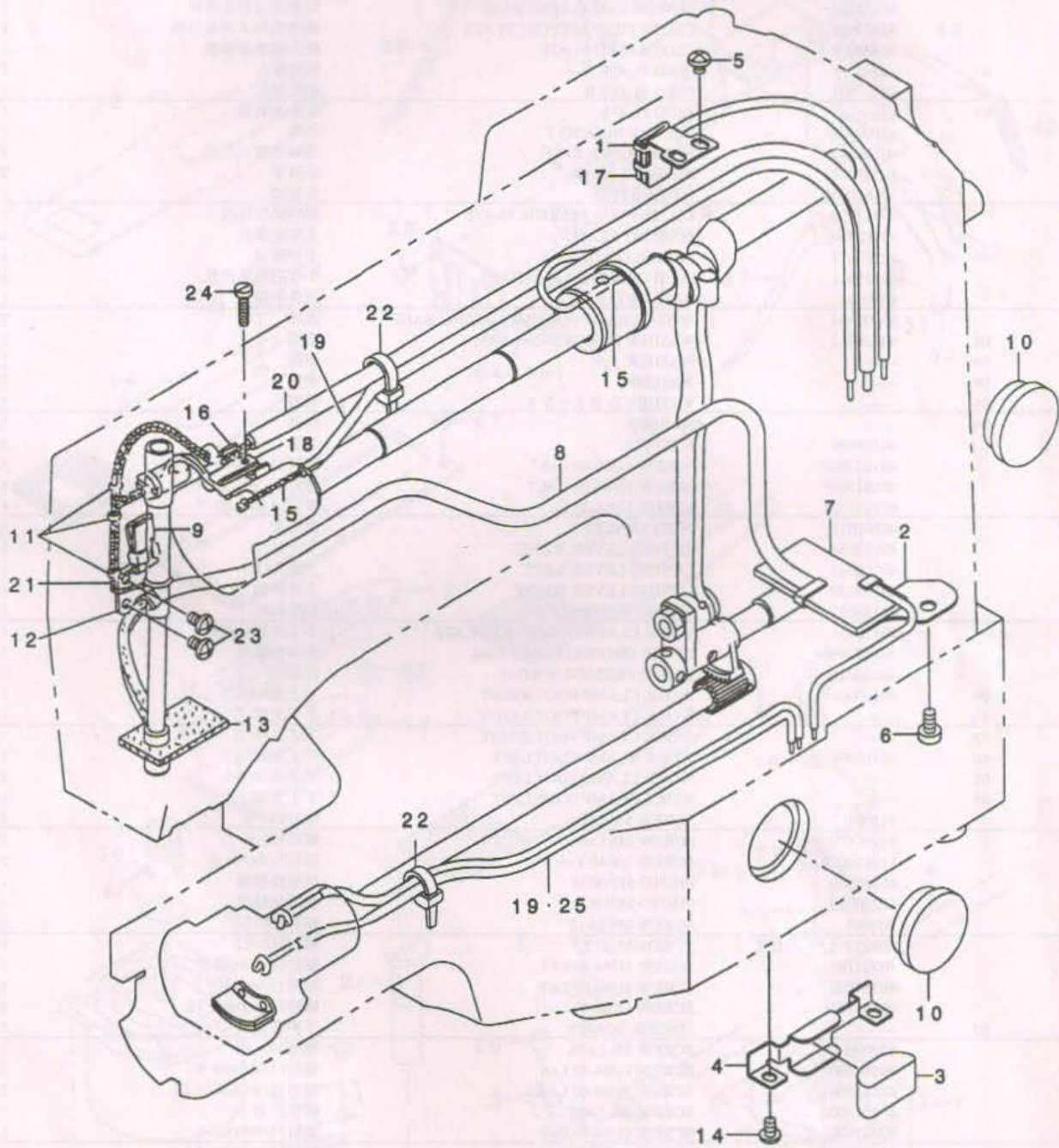
序号	注解	公司件号	DESCRIPTION	零件名称	用量
1		40312025	CAM FOLLOWER STOPPER	凸轮止动板	1
2		40312026	SOLENOID ARM	螺线管杆臂	1
3		4030500500	CONNECTING ROD	连接曲柄	1
4		40312027	CONNECTING BAR	连接棒	1
5		4033001200	THREAD TRIMMING SOLENOID ASM	螺线管剪线装置	1
6		40312028	SOLENOID INSTALLING BASE	螺线管装置底板	1
7		40330006	SOLENOID FOR THREAD TRIMMING	螺线管剪线控制阀	1
8		40328006	SOLENOID RUBBER	橡胶垫圈	1
9		403S16002	NUT	螺母	1
10		403S16003	NUT M4	螺母M4	2
11		401S16011	NUT 1/4-40	螺母1/4x40	1
12		40328007	WASHER 4.5x8x0.5	垫圈	2
13		-----	2-POLE NYLON PLUG	插销尼龙塞座	1
14		40330008	PIN CONTACT	线缆插销	2
15		40327010	SPRING	压簧	1
16		40327011	THREAD TRIM LINK SPRING	压簧	1
17		40310003	THREAD TRIMMER CAM	剪线凸轮	1
18		40302003	THREAD TRIMMER SHAFT	剪线传动轴	1
19		403S14001	SCREW M5 L=30	螺钉M5x30	1
20		40326010	SOLENOID PIN	螺线管连接螺柱销	1
21		4011500100	NEEDLE PLATE	钉板座	1
22		40328010	NEEDLE ROD CRANK WASHER	垫圈	1
23		40328011	CLOTH PLATE WASHER	垫圈	1
24		401S30008	TENSION SPRING ADJUSTING SCREW	拉簧调节螺钉	1
25		40312029	THREAD TRIMMER LINK	剪线连接金属板	1
26		4011202200	THREAD CUTTER LEVER ASM.,LARG	剪线驱动大杆	1
27		4011202000	THREAD CUTTER LEVER ASM., SMALL	剪线驱动小杆	1
28		40103009	THREAD CUTTING LEVER RING	衬套	1
29		403S30004	THREAD CUTTER LEVER SHAFT	切线插杆螺柱	1
30		40105003	MOVING KNIFE LINK	转刀连接杆	1
31		40119001	MOVING KNIFE ASM	转刀	1
32	01	40128009	MOVING KNIFE WASHER A	垫圈A	1
33	01	40128009	MOVING KNIFE WASHER B	垫圈B	1
34	01	40128009	MOVING KNIFE WASHER C	垫圈C	1
35	01	40128009	MOVING KNIFE WASHER D	垫圈D	1
36	01	40128009	MOVING KNIFE WASHER E	垫圈E	1
37		40119002	FIXING KNIFE	定刀	1
38		40303005	ROLLER	滚筒	1
39		403S20003	ROLLER SHAFT	滚筒铰链螺钉	1
40		N01004	NUT M5	螺母M5	1
41		409S16018	NUT 11/64-40	螺母11/64x40	1
42		409S16018	NUT 11/64-40	螺母11/64x40	2
43		401S16004	NUT 3/16-28	螺母3/16x28	1
44		H05003	E-RING	卡簧	1
45		40328013	WASHER 5x10.5x1	垫圈	1
46		401S20007	HINGE SCREW D=5.0 H=0.9	铰链螺钉D=5, H=0.9	1
47		403S20004	HINGE SCREW D=5 H=8	铰链螺钉D=5, H=8	2
48		401S20019	HINGE SCREW D=6.5 H=3	铰链螺钉D6.5, H3	1
49		403S20005	HINGE SCREW D=7.94 H=3.1	铰链螺钉D=7.94, H=3.1	1
50		403S20006	HINGE SCREW H=11 W=3	铰链螺钉H=11, W=3.1	1
51		401S17006	SCREW 3/32-56 L=2.2	螺钉3/32x56-2.2	2
52		401S17003	SCREW 11/64-40 L=5.5	螺钉11/64x40-5.5	4
53		401S20008	SCREW 11/64-40 L=4.0	螺钉11/64x40-4.0	1
54		401S11028	SCREW 11/64-40 L=7	螺钉11/64x40-7	1
55		401S11004	SCREW 11/64-40 L=7.8	螺钉11/64x40-7.8	2
56		403S11005	SCREW 3/16-28 L=9	螺钉3/16x28-9	2
57		401S11020	SCREW 9/64-40 L=3.5	螺钉9/64x40-7	2
58		401S11021	SCREW 11/64-40 L=7	螺钉11/64x28-8	1
59		401S14001	SCREW 15/64-28 L=8	螺钉15/64x28-8	1
60		401S14002	SCREW	螺钉	2
61		40128008	WASHER	垫圈	1
62		40328013	WASHER	垫圈	1
63	02	40115003	NEEDLE HOLE GUIDE	针板	1
64	03	-----	NEEDLE HOLE GUIDE	针板	1
65	04	-----	NEEDLE HOLE GUIDE	针板	1
66		40312030	THREAD RELEASE ARM	松线调节臂杆	1
67		40312031	TENSION RELEASE NOTCH	压力调节表盘	1
68		4013100400	FIRST THREAD TENSION ASM	第一紧线调节器	1
69		401S16010	TENSION NUT, NO.1	紧线调节螺母	1
70		40112026	THREAD TENSION DISK	夹线盘	2
71		40126010	THREAD TENSION ROD	紧线螺柱	1
72		40127009	FIRST THREAD TENSION SPRING	压线簧	1
73		403S20007	TENSION RELEASE-ARM PIN	压力调节柱销	1
74	*	40308004	THRUST COLLAR ASM. D=8.0 W=8	挡圈	1
75		401S16002	NUT 15/64-28	螺母	1
76		403S13001	SCREW M4 L=6	螺钉	2
77		40327012	TRIPPING LEVER TENSION SPRING	压簧	1
78		40342032	CAM FOLLOWER ASM.	凸轮辅助杆	1

8. 进给部分 / FEED MECHANISM COMPONENTS



序号	注解	公司件号	DESCRIPTION	零件名称	用量
1		40325004	CROSSFEED ARM	横向供给插杆	1
2		40325005	CROSSFEED GEAR	横向供给齿轮	1
3		40304003	LENGTHWISE FEED ARM	套接长度送料臂	1
4		40325006	LENGTHWISE FEED SHAFT	套接长度送料轴	1
5		40325007	LENGTHWISE FEED GEAR	套接长度送料齿轮	1
6		40333002	X FEED STEPPING MOTOR	X向供给分级电机	1
7		40333003	Y FEED STEPPING MOTOR	Y向供给分级电机	1
8		40312034	CROSSFEED SENSOR SLIT	供给裂状金属板	1
9		40312035	SENSOR INSTALLING BASE	传感器安装板	1
10		40312036	LENGTHWISE FEED SENSOR SLIT	套接长度送料裂状金属板	1
11		40312037	SENSOR INSTALLING BASE	传感器安装金属板	1
12		40312038	CLOTH FEED SUPPORT PLATE	横向供给支承金属板	1
13		40304004	CLOTH FEED PLATE	横向供给金属板	1
14	01	-----	FEED PLATE A	供给板A	1
15	02	40315001	FEED PLATE B	供给板B	1
16	03	-----	FEED PLATE	供给金属板	1
17		40109002	SQUARE BLOCK	滑块	1
18		40126025	SLIDE BLOCK STUD	滑块连接大头销	1
19		40303007	BUSHING REAR	后衬套	2
20		401S20018	HINGE STUD	铰链销	1
21		40312039	CLOTH FEED PRESSER PLATE	横向供给压板	1
22		40112049	SUPPORT PLATE	支架金属板	1
23	08	40127017	FINGER GUARDE	手护装置	1
24		40326011	FEED DRIVING ARM SHAFT	十字送料通杆柱	1
25		4026021	BALL RETAINER	滚珠护圈	1
26		40109004	WORK CLAMP FOOT MOUNTING BASE	滚珠	7
27	04	40128012	WASHER FOR DRIVING ARM	垫圈	2
28	04	-----	WASHER	垫圈	2
29	04	-----	WASHER	垫圈	2
30	04	-----	WASHER D	垫圈	2
31	04	-----	WASHER	垫圈	2
32		40129001	E-RING 7	卡簧	2
33		401S17007	SCREW 11/64-40 L=8.7	螺钉11/64x40-8.7	5
34		401S15007	SCREW 15/64-28 L=4.7	螺钉15/64x28-4.7	1
35		401S11021	SCREW 11/64-40 L=7	螺钉11/64x40-7	4
36		40101011	FEED BRACKET	供给架	1
37		40112050	LIFTING LEVER, RIGHT	上升杆(右)	1
38		40112048	LIFTING LEVER, LEFT	上升杆(左)	1
39		40126020	LIFTING LEVER SHAFT	上升杆轴	1
40		40126022	SPRING SUSPENSION	拉簧钩柱	1
41		40112051	WORK CLAMP FOOT FACE PLATE	手工夹脚正面板	1
42		4011204600	LEVER DRIVING PLATE ASM	驱动金属板	2
43		40127016	CLOTH PRESSER SPRING	拉簧	2
44	06	40116001	WORK CLAMP FOOT,RIGHT	手工夹脚(右)	1
45	02	-----	WORK CLAMP FOOT,RIGHT	手工夹脚(右)	1
46	03	-----	WORK CLAMP FOOT,RIGHT	手工夹脚(右)	1
47	06	40116004	WORK CLAMP FOOT,LEFT	手工夹脚(左)	1
48	02	-----	WORK CLAMP FOOT,LEFT	手工夹脚(左)	1
49	03	-----	WORK CLAMP FOOT,LEFT	手工夹脚(左)	1
50		S11001	SCREW M6 L=6	螺钉M6-6	2
51		S11001	SCREW M6 L=6	螺钉M6-6	2
52		116S14004	SCREW 1/4-40 L=6	螺钉1/4x40-6	2
53	*	40330009	PHOTO SENSOR	视频传感器	1
54		40330010	PHOTO SENSOR	视频传感器	1
55		S01003	SCREW M4 L=12	螺钉M4-12	1
56		S01027	SCREW M3x12	螺钉M3-12	1
57		403S11001	SCREW 11/64-40 L=7	螺钉11/64x40-7	2
58		403S11001	SCREW 11/64-40 L=7	螺钉11/64x40-7	1
59		401S11026	SCREW 11/64-40 L=11	螺钉11/64x40-11	8
60	03	-----	FINGER GUARD	手护装置	1
61		S05030	SCREW M6 L=18	螺钉M6-18	1
62		403S11001	SCREW 11/64-40 L=6	螺钉11/64x40-6	3
63		401S17002	SCREW 11/64-40 L=8.5	螺钉11/64x40-8.5	2
64		403S13002	SCREW M6 L=10	螺钉6-10	1
65		403S11001	SCREW 11/64-40 L=6	螺钉11/64x40-6	1
66		401S11024	SCREW 11/64-40 L=4.3	螺钉11/64x40-4.3	2
67		401S17003	SCREW 11/64-40 L=4.8	螺钉11/64x40-4.8	6
68		401S13007	SCREW 15/64-28 L=10.5	螺钉15/64x28-10.5	1
69		401S11013	SCREW 15/64-28 L=11.5	螺钉15/64x28-11.5	1
70		401S15008	SCREW 1/8-44 L=2.8	螺钉1/8x44-2.8	2
71		40128013	WASHER 6.2X13X1	垫圈	1
72		40128013	WASHER 6.5X13X0.8	垫圈	1
73	05	-----	FEED PLATE D	供给板D	1
74	07	-----	FEED PLATE H	供给板H	1
75		-----	RUBBER RING	橡胶环	1
76		-----	THRUST COLLAR ASM. D=9. 53 W=8	橡胶环	1
77		-----	THRUST COLLAR D=9.53 W=8	橡胶环	1
78		-----	SCREW 11/64-40 L=3.5	螺钉	2
79		40328012	RUBBER WASHER	橡胶垫圈	2

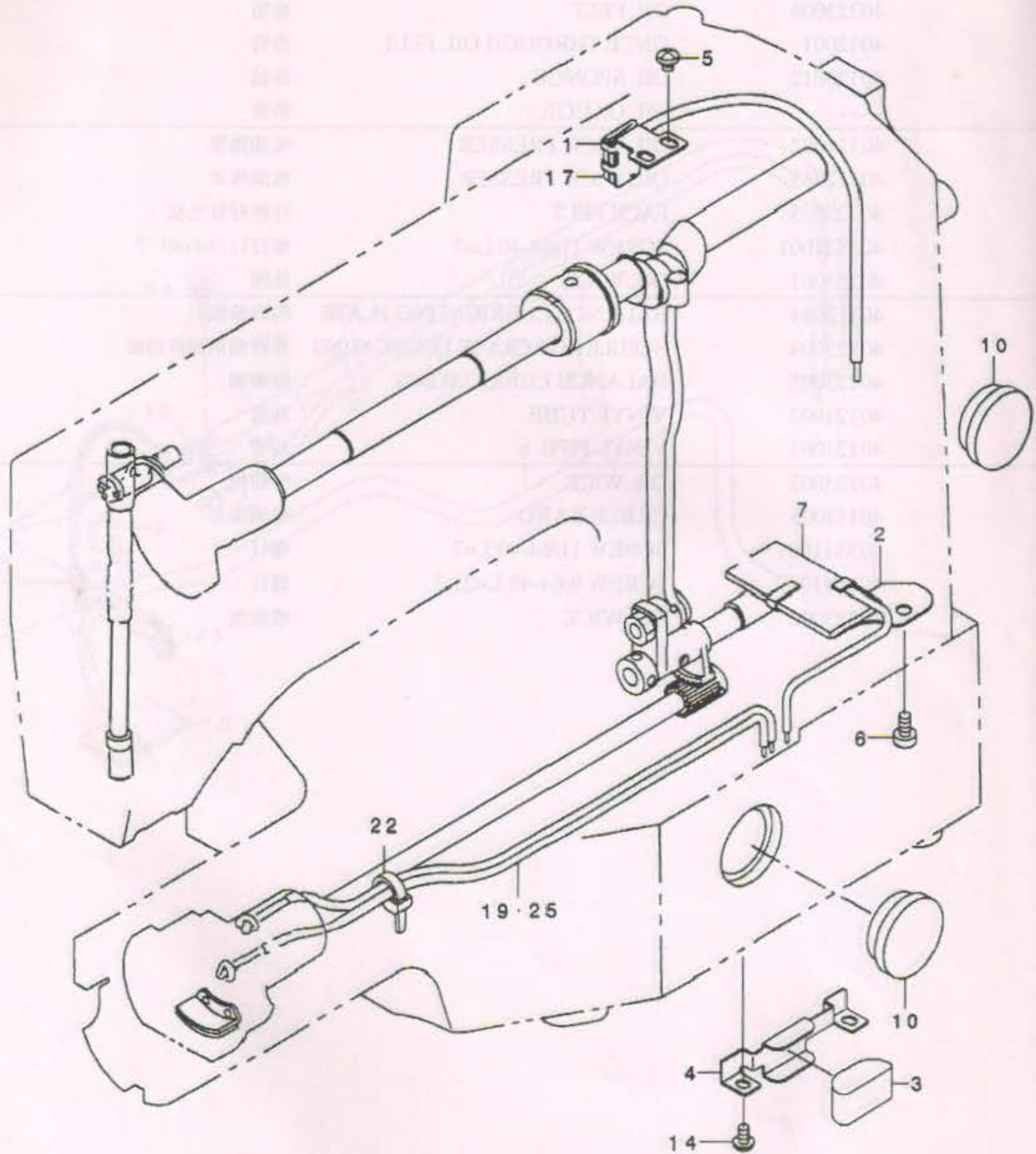
9. 润滑部分 / LUBRICATION COMPONENTS



序号	注解	公司件号	DESCRIPTION	零件名称	用量
1		40112087	OIL SHIELD	防油护罩板	1
2		40312041	OIL SHIELD	防油护罩板	1
3		40323003	OIL FELT	油毡	1
4		40312042	FELT PRESSER	油毡压板	1
5		401S11041	SCREW 11/64-40 L=5	螺钉11/64x40-5	2
6		403S11005	SCREW 3/16-28 L=9	螺钉3/16x28-9	1
7		40323004	OIL FELT	油毡	1
8		4012001	ONCE THROUGH OIL FELT	油管	1
9	*	40123012	OIL SPONGE	油毡	1
10		-----	OIL GAUGE	油窗	2
11		40112082	OIL WICK PRESSER	吸油绳架	3
12		40112083	OIL WICK PRESSER	吸油绳架	1
13	*	40323005	FACE FELT	针杆衬管毛毡	1
14		403S11001	SCREW 11/64-40 L=7	螺钉11/64x40-7	2
15		40123001	OIL WICK	油绳	1
16		40112084	BALANCE LUBRICATING PLATE	润滑油板	1
17		40123004	NEEDLE ROD CRANK LUBRICATING	针杆曲柄润滑油板	1
18		40123005	BALANCE LUBRICATING	吸油棉	1
19		40121002	VINYL TUBE	油管	1
20		40121001	VINYL PIPE	油管	1
21		40123002	OIL WICK	吸油绳	2
22		40111005	CABLE BAND	吸油绳架	2
23		403S11001	SCREW 11/64-40 L=7	螺钉	1
24		401S11039	SCREW 9/64-40 L=21.2	螺钉	1
25	*	40123002	OIL WICK	吸油绳	

9. 润滑部分 / LUBRICATION COMPONENTS

*适用于1900W(头部无油)系列产品

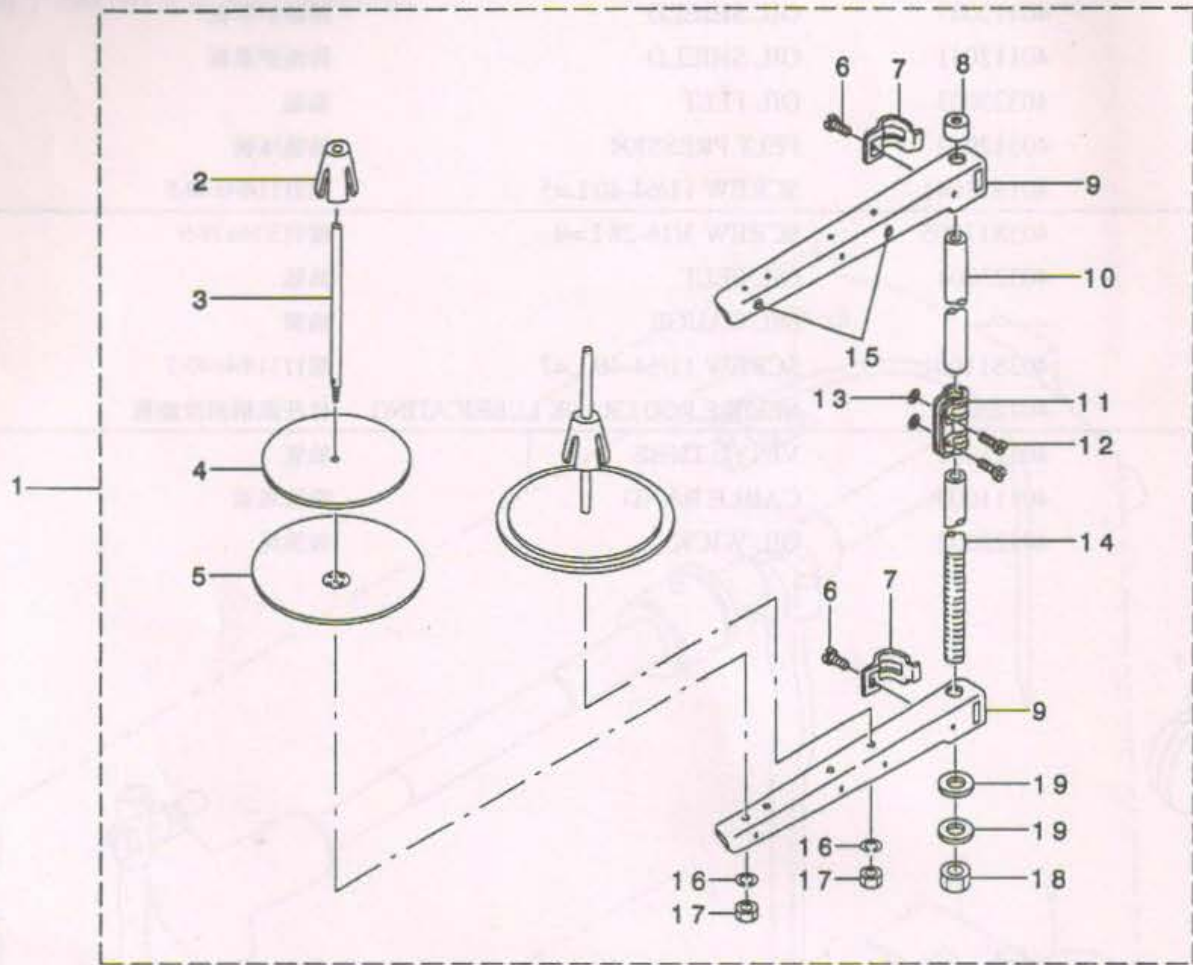


序号	注解	公司件号	DESCRIPTION	零件名称	用量
1		40112087	OIL SHIELD	防油护罩板	1
2		40112041	OIL SHIELD	防油护罩板	1
3		40323003	OIL FELT	油毡	1
4		40312042	FELT PRESSER	油毡压板	1
5		401S11041	SCREW 11/64-40 L=5	螺钉11/64x40-5	2
6		403S11005	SCREW 3/16-28 L=9	螺钉3/16x28-9	1
7		40323004	OIL FELT	油毡	1
10		-----	OIL GAUGE	油窗	2
14		403S11001	SCREW 11/64-40 L=7	螺钉11/64x40-7	2
17		40123004	NEEDLE ROD CRANK LUBRICATING	针杆曲柄润滑油板	1
19		40121002	VINYL TUBE	油管	1
22		40111005	CABLE BAND	吸油绳架	1
25		40123002	OIL WICK	吸油绳	2



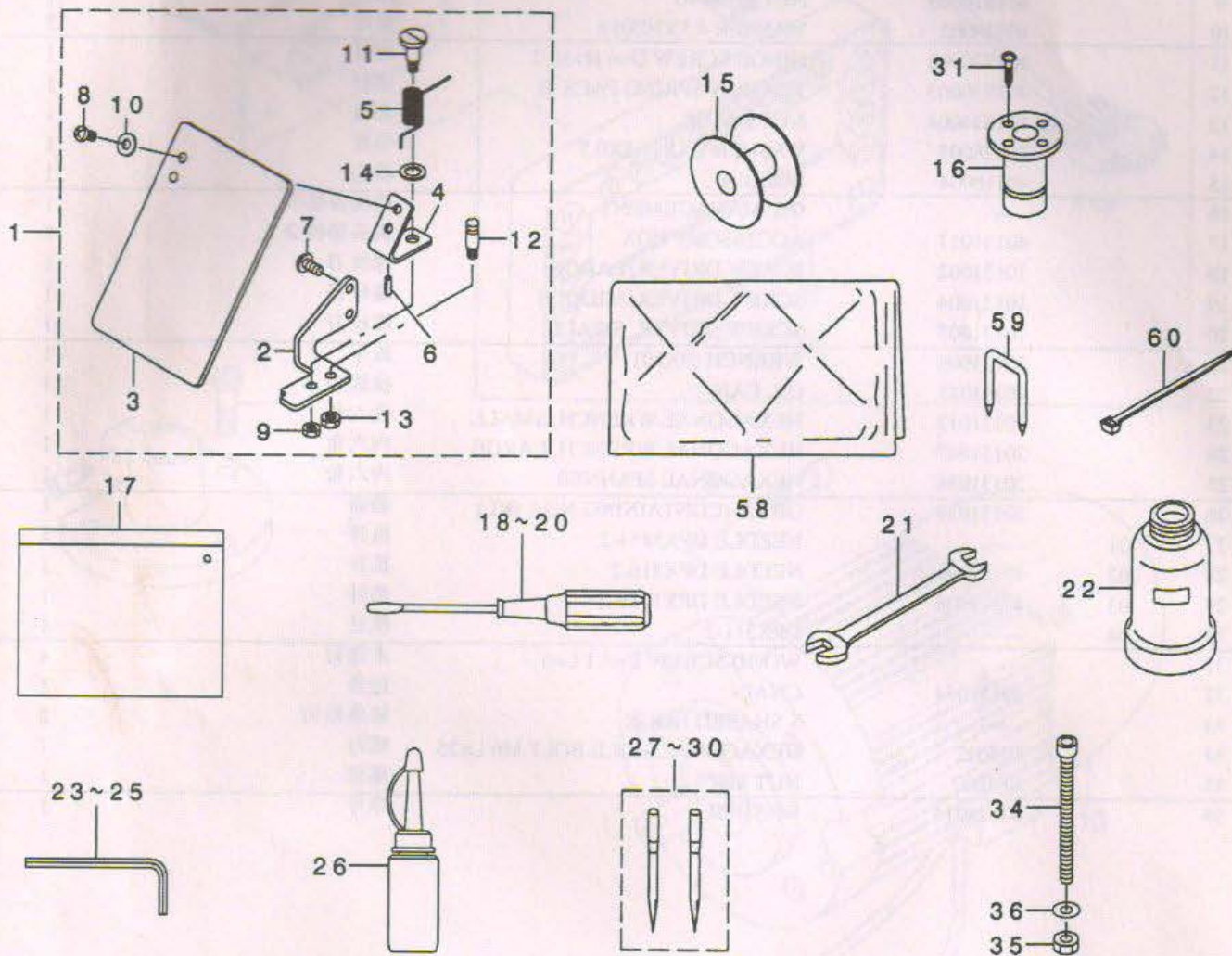
序号	零件名称	DESCRIPTION	公司件号	数量
1	油窗	OIL GAUGE	-----	2
2	吸油绳架	CABLE BAND	40111005	1
3	油管	VINYL TUBE	40121002	1
4	针杆曲柄润滑油板	NEEDLE ROD CRANK LUBRICATING	40123004	1
5	油毡	OIL FELT	40323003	1
6	油毡压板	FELT PRESSER	40312042	1
7	防油护罩板	OIL SHIELD	40112041	1
8	防油护罩板	OIL SHIELD	40112087	1
9	螺钉11/64x40-7	SCREW 11/64-40 L=7	403S11001	2
10	螺钉11/64x40-5	SCREW 11/64-40 L=5	401S11041	2
11	螺钉3/16x28-9	SCREW 3/16-28 L=9	403S11005	1
12	油毡	OIL FELT	40323004	1
13	油管	VINYL TUBE	40121002	1
14	针杆曲柄润滑油板	NEEDLE ROD CRANK LUBRICATING	40123004	1
15	油毡压板	FELT PRESSER	40312042	1
16	油毡	OIL FELT	40323003	1
17	防油护罩板	OIL SHIELD	40112041	1
18	防油护罩板	OIL SHIELD	40112087	1
19	吸油绳	OIL WICK	40123002	2

10. 线架部分 / THREAD STAND COMPONENTS



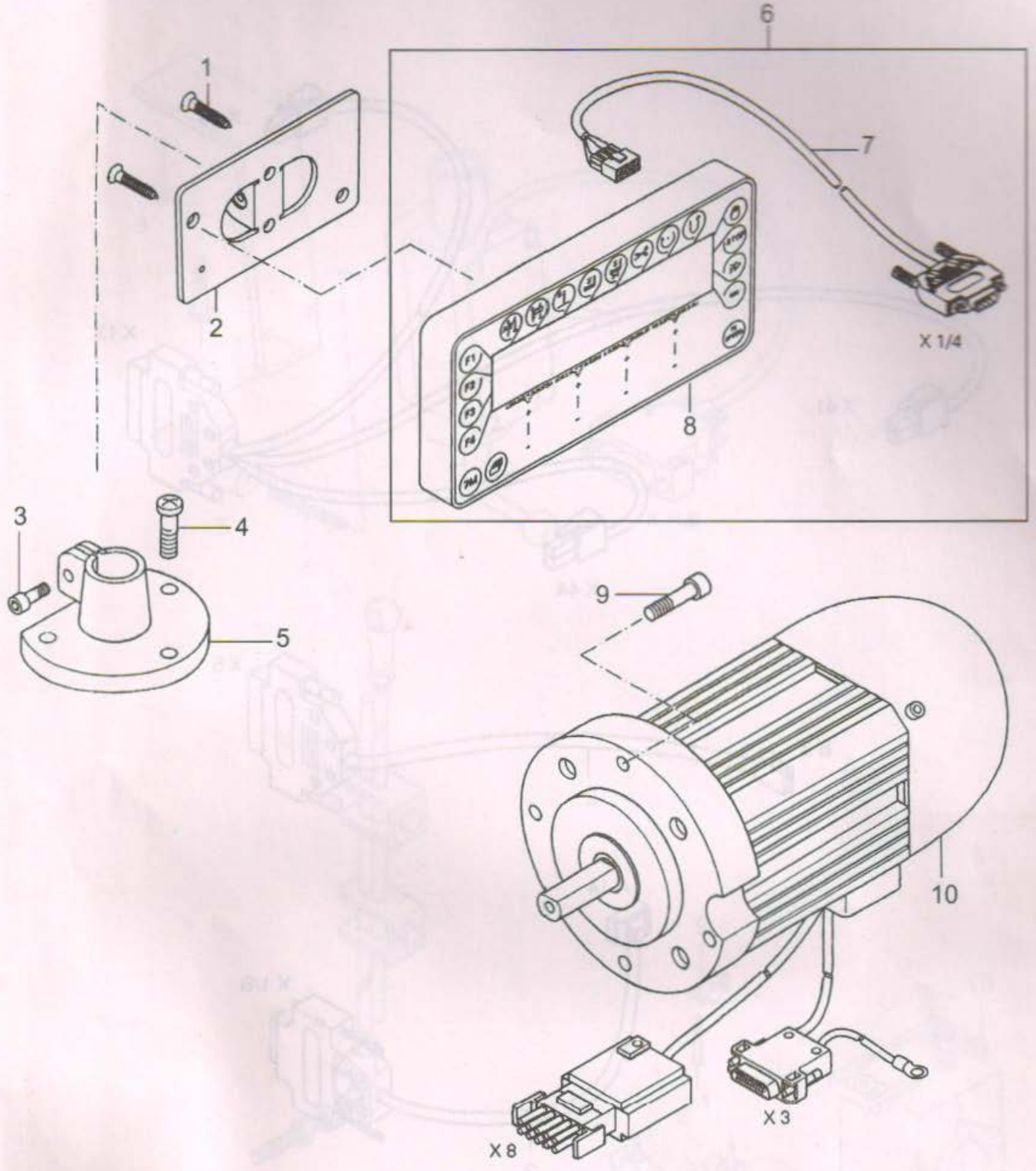
序号	注解	公司件号	DESCRIPTION	零件名称	用量
1		1013100700	THREAD STAND ASM.	过线架组件	1
2		-----	SPOOL RETAINER	线架缓冲支架	2
3		-----	SPOOL PIN	线轴	2
4		-----	SPOOL REST CUSHION	线盘软垫	2
5		-----	SPOOL REST	线盘	2
6		-----	SCREW M6 L=16	螺钉	2
7		-----	THREAD GUIDE ARM JOINT	过线架固定夹	2
8		-----	SPOOL REST ROD RUBBER CAP	线架支撑管套	1
9		-----	SPOOL REST ARM	线架	2
10		-----	SPOOL REST ROD, UPPER	线架支撑管1	1
11		-----	SPOOL REST POD JOINT	支撑管接头	1
12		-----	SCREW M5 L=14	螺钉	2
13		-----	NUT M5	螺母	2
14		-----	SPOOL REST ROD, LOWER	线架支撑管2	1
15		-----	THREAD GUIDE	过线套	2
16		-----	SPRING WASHER	弹簧垫圈	2
17		-----	NUT M5	螺母	2
18		-----	NUT M16x1.5	螺母	1
19		-----	WASHER 17x30x2.6	垫片	2

11. 附件部分 / ACCESSORIE PART COMPONENTS

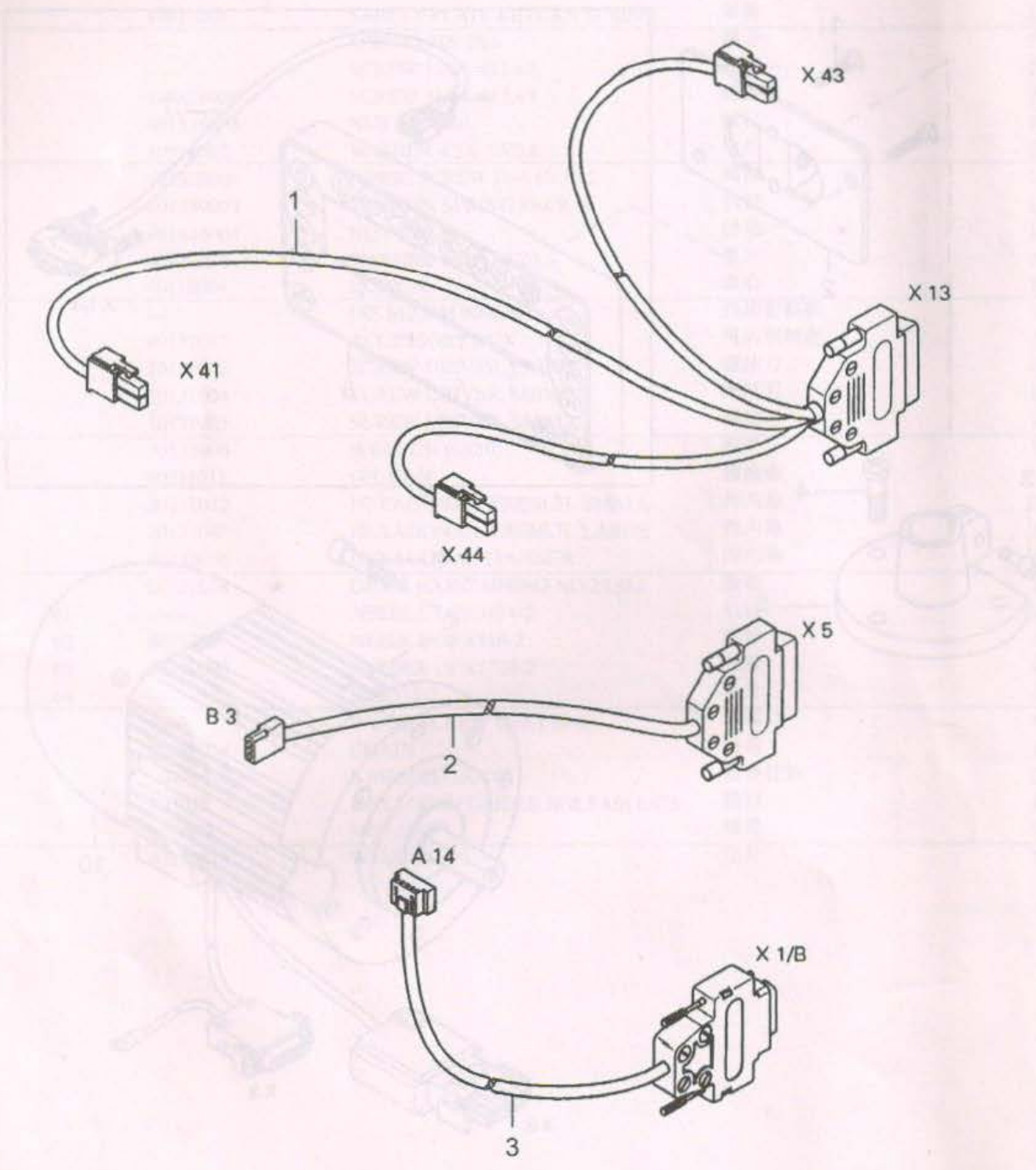


序号	注解	公司件号	DESCRIPTION	零件名称	用量
1		-----	SAFETY PLATE ASM.	防护罩组件	1
2		40112009	SAFETY PLATE INSTALLING BASE	护罩安装板	1
3		40911006	SAFETY PLATE	护罩	1
4		40112008	SAFETY PLATE INSTALLING PLATE	护罩板	1
5		40927005	SAFETY PLATE RETURN SPRING	弹簧	1
6		-----	SPRING PIN 2X6	销子	1
7		-----	SCREW 11/64-40 L=7	螺钉	2
8		409S11008	SCREW 11/64-40 L=7	螺钉	2
9		401S16003	NUT 11/64-40	螺钉	1
10		40928002	WASHER 4.5X10X0.8	垫片	2
11		401S20004	HINGE SCREW D=6 H=10.2	螺钉	1
12		401S30003	TENSION SPRING PACK B	销钉	1
13		401S16004	NUT 3/16-28	螺母	1
14		40928003	WASHER 7.4X11.8X0.5	垫片	1
15		40118004	BOBBIN	梭心	1
16		-----	OIL MANAGEMENT	挡油安装板	1
17		40131017	ACCESSORY BOX	机头塑料套	1
18		10131002	SCREW DRIVER, LARGE	螺丝刀	1
19		10131004	SCREW DRIVER, MIDDLE	螺丝刀	1
20		10131003	SCREW DRIVER, SMALL	螺丝刀	1
21		30131006	WRENCH (9X10)	扳手	1
22		40311011	OIL CAN	接油壶	1
23		30131012	HEXAGONAL WRENCH, SMALL	内六角	1
24		20131047	HEXAGONAL WRENCH, LARGE	内六角	1
25		20131056	HEXAGONAL SPANNER	内六角	1
26		20131038	OILER (CONTAINING NO.2 OIL)	油壶	1
27	01	-----	NEEDLE DPX5#14-2	机针	1
28	02	40117001	NEEDLE DPX516-2	机针	1
29	03	40319006	NEEDLE DPX1719-2	机针	1
30	04	-----	DPX511-2	机针	1
31		-----	WOOD SCREW D=3.1 L=6	木螺钉	4
32		20131054	CHAIN	链条	1
33		-----	S SHAPED HOOK	链条挂钩	2
34		S05032	HEXAGONAL-HOLE BOLT M6 L=75	螺钉	1
35		N01007	NUT M6	螺母	1
36		40128013	WASHER	垫片	1

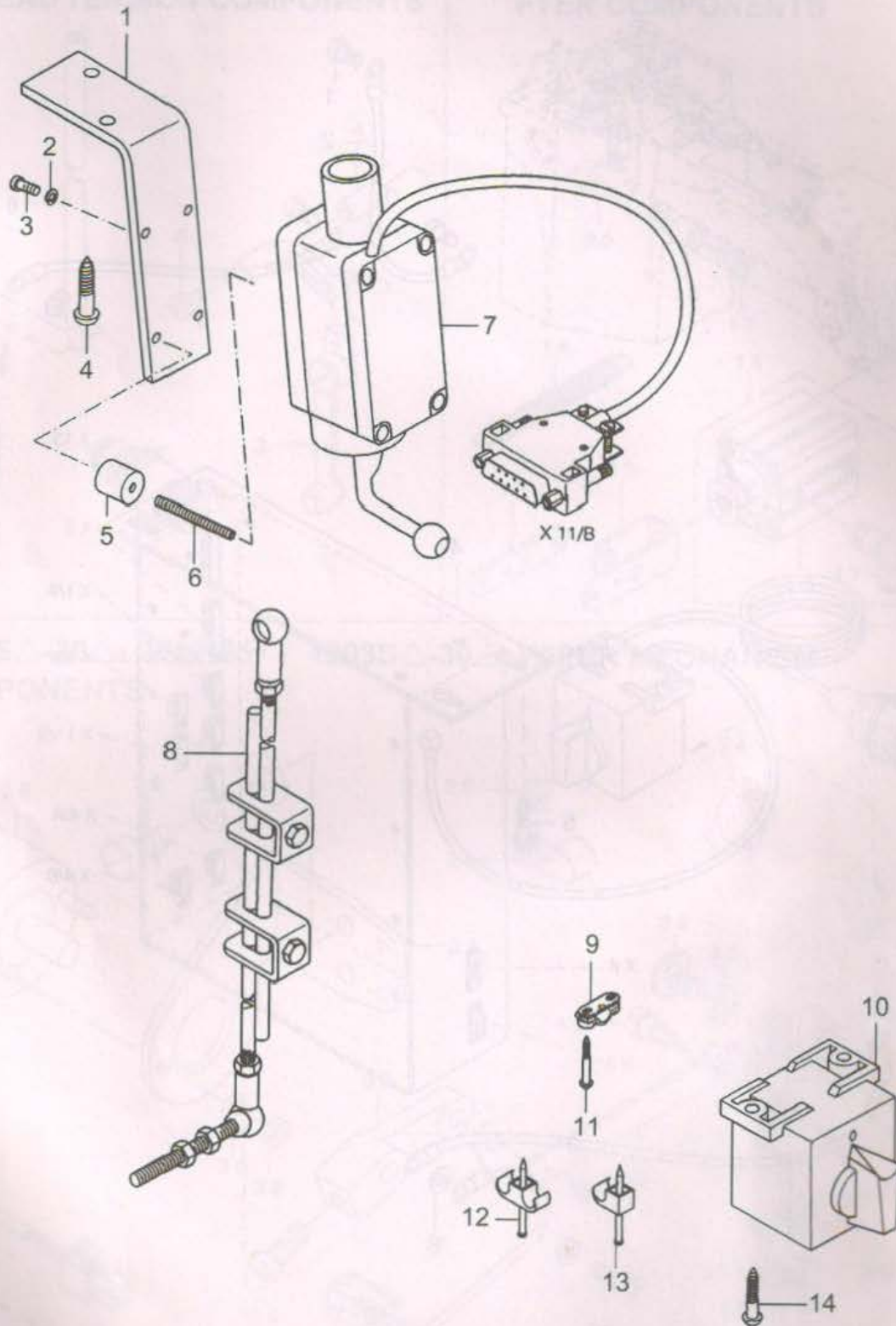
12. 控制箱部件(1) / ELECTRICITY COMPONENTS (1)



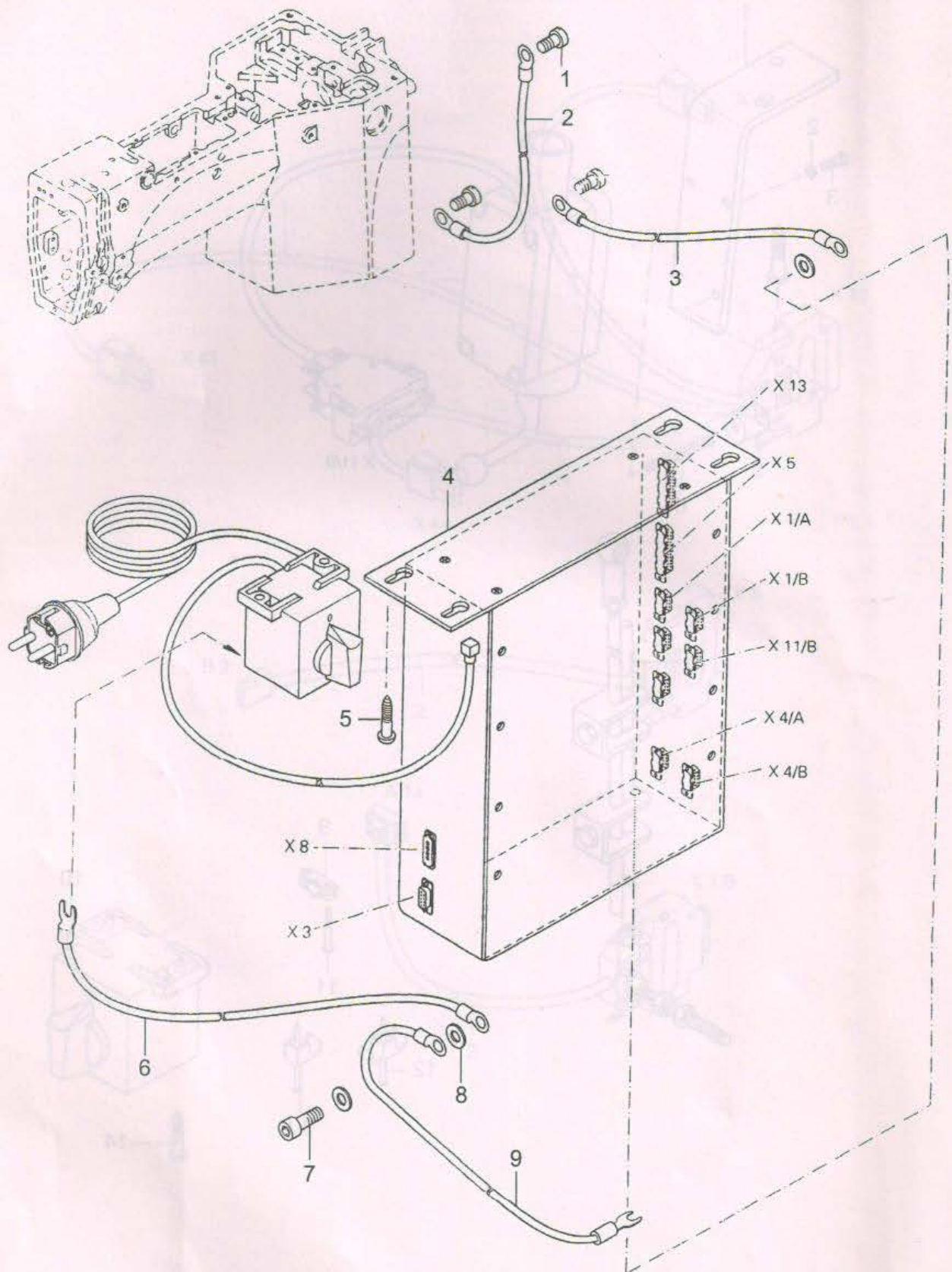
13. 控制箱部件(2) / ELECTRICITY COMPONENTS (2)



14. 控制箱部件(3) / ELECTRICITY COMPONENTS (3)

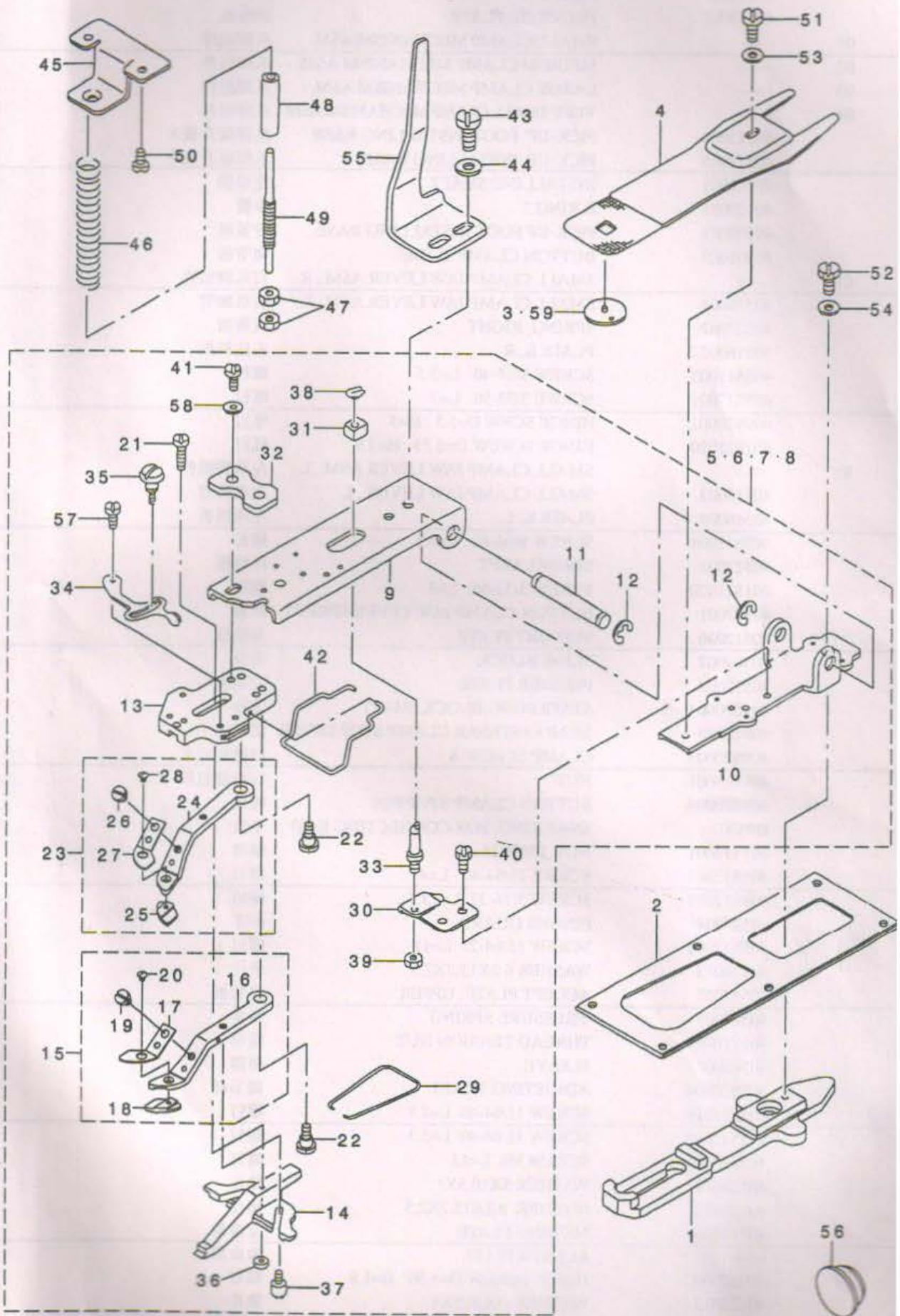


15. 控制箱部件(4) / ELECTRICITY COMPONENTS (4)



序号	注解	公司件号	DESCRIPTION	零件名称	用量
1		40513001	NEEDLE BAR THREAD GUIDE	过线环	1
2		401S11014	SCREW 1/8-44 L=4.5	螺钉	1
3		4013800100	THREAD TAKE-UP LEVER ASM.	挑线杆组件	1
4		40526002	LINK TAKE-UP LEVER PIN, HEAVY	挑线杆销子	1
5		401S30004	SET SCREW	螺钉	1
6		40102002	NEEDLE BAR	针杆	1
7		40117001	NEEDLE DPX17 #14	机针	1
8		4013100300	TENSION CONTROLLER NO.2 ASM.	夹线器组件	1
9		40528001	HOOK SHAFT WASHER	垫片	1
10		40503001	STOP MOTION TRIPPING LEVER OAM	滚筒	1
11		405S20001	HINGE SCREW D=7.94 H=12.7	铰链螺钉	1
12	01	-----	SOLENOID LINK	连接板	1
13	02	-----	CYLINDER KNUCKLE	边接板	1
14	01	-----	TENTION SPRING	拉簧	1
15	02	-----	PRESSER LIFTING CYLINDER ASM.	汽缸组件	1
16		-----	AIR CYLINDER	汽缸组件	1
17		-----	ELBOW UNION 6XM5	汽缸组件	2
18	02	-----	PRESSER LIFTER CYLINDER BASE	安装板	1
19	02	-----	SCREW M6 L=16	螺钉	2
20		40504001	CONNECTING ARM	曲柄	1
21	03	40527001	SPRING	弹簧	1
22		405S11001	SCREW 3/32-56 L=3	螺钉	2
23		114S16001	NUT 11/64-40	螺母	1
24		-----	RUBBER PLUG	油封	1
25		40511001	CABLE CLIP	线夹	3
26		401S11004	SCREW 11/64-40 L=6	螺钉	3
27		40530001	SOLENOID RELAY CABLE ASM.	线缆	1
28		40530002	SOLENOID FOR WIPER ASM.	电磁铁	1
29		403S16003	NUT M4	螺母	2
30		40328007	SPRING WASHER M4	垫片	2
31		40512001	SOLENOID FITING PLATE	螺钉	1
32		405S11002	SCREW 11/64-40 L=9.5	安装板	2
33	*	40505001	WIPER ARM	拨线曲柄	1
34	*	401S11025	SCREW 11/64-40 L10.5	螺钉	1
35		40512002	WIPER LINK	连接板	1
36		-----	WASHER	垫圈	1
37		40328012	WASHER 4.5X10X0.8	垫片	2
38		-----	SPRING WASHER 4.5X8.5X1	弹簧垫片	2
39	03	405S20002	HINGE SCREW D=3.65 H=2.6	螺钉	1
40	03	40128001	WAVE WASHER	波形垫片	1
41	03	401S16004	NUT 3/16-28	螺母	1
42		405S20003	HINGE SCREW	螺钉	2
43		40512003	WIPER	拨线杆	1
44		-----	VERTICAL FEED SHAFT SPRING	弹簧	1

19. 1903-301: 钮扣定位部分 / 1903-301: BUTTON CLAMP COMPL FOR SMALL-BUTTONS



序号	注解	公司件号	DESCRIPTION	零件名称	用量
1		40304004	CLOTH FEED PLATE	供给金属板	1
2		40312039	FEED PLATE PRESSER PLATE	供给压板	1
3		40515001	GUIDE	针杆	1
4		40515002	PRESSURE PLATE	供给板	1
5	01	-----	SMALL CLAMP MECHANISM ASM.	爪脚组件	1
6	02	-----	MEDIUM CLAMP MECHANISM ASM.	爪脚组件	1
7	03	-----	LARGE CLAMP MECHANISM ASM.	爪脚组件	1
8	04	-----	VERY SMALL CLAMP MECHANISM ASM	爪脚组件	1
9		40512004	PICK-UP FOOT INSTALLING BASE	爪脚提升板A	1
10		40512005	PICK-UP INSTALLING BASE	爪脚提升板B	1
11		40526001	INSTALLING SHAFT	连接销	1
12		40129001	E-RING 7	卡簧	2
13		40509001	PICK-UP FOOT INSTALLING BASE	安装板	1
14		40901003	BUTTON CLAMP SLIDE	调节板	1
15	01	-----	SMALL CLAMP JAW LEVER ASM., R	右爪脚组件	1
16		40516001	SMALL CLAMP JAW LEVER ASM., L	右爪脚臂	1
17		40527002	SPRING, RIGHT	压簧板	1
18		40516002	PLATE K, R	右压料板	1
19		405S11003	SCREW 9/64-40 L=3.5	螺钉	1
20		405S17001	SCRWE 3/32-56 L=3	螺钉	1
21		409S20001	HINGE SCR W D=5.5 H=3	螺钉	1
22		401S11020	HINGE SCREW D=6.35 H=3.9	螺钉	2
23	01	-----	SMALL CLAMP JAW LEVER ASM., L	左爪脚组件	1
24		40516003	SMALL CLAMP JAW LEVER, L	左爪脚臂	1
25		40516004	PLATE K, L	左压料板	1
26		405S11004	SCREW 9/64-40 L=3.5	螺钉	1
27		40527003	SPRING, LEFT	压料板	1
28		401S11020	SCREW 3/32-56 L=3	螺钉	1
29		40927001	BUTTON CLAMP JAW LEVER SPRING	弹簧	1
30		40512006	SUPPORT PLATE	安装板	1
31		40509002	SLIDE BLOCK	滑块	1
32		40512002	PRESSER PLATE	安装板	1
33		405S30001	STATIONING BLOCK SHAFT	螺栓	1
34		40912003	SNAP FASTENER CLAMP STOP LEVER	调节扳手	1
35		409S20003	CLAMP SCREW A	铰链螺钉A	1
36		409S16001	NUT	铰链螺钉B	1
37		409S20004	BUTTON CLAMP STOP PIN	螺栓	2
38		H05007	SNAP RING, FOR CONNECTING ROD	卡簧	1
39		401S16001	NUT 15/64-28	螺母	1
40		405S12001	SCRWE 11/64-40 L=4	螺钉	2
41		409S12001	SCREW 3/16-32 L=13.5	螺钉	2
42		40527004	FINGER GUARD	护手	1
43		405S12002	SCREW 15/64-28 L=11	螺钉	2
44		40128013	WASHER 6.1X15.2X2.5	垫片	2
45		40512007	ACCEPT PLATE, UPPER	安装板	1
46		40527005	PRESSURE SPRING	弹簧	1
47		405S16001	THREAD TENSION NUT	螺母	2
48		40503002	SLEEVE	套筒	1
49		405S30004	ADJUSTING SHAFT	调节杆	1
50		401S11018	SCREW 11/64-40 L=7.8	螺钉	2
51		405S12003	SCREW 11/64-40 L=5.3	螺钉	1
52		405S13001	SCREW M6 L=12	螺钉	1
53		40128013	WASHER 5X10.5X1	垫片	1
54		40128013	WASHER 6.1X15.2X2.5	垫片	1
55		40512008	MOVING PLATE	支撑架	1
56		-----	RUBBER PLUG	橡皮塞	1
57		409S20002	HINGE SCREW D=5.50 H=1.8	螺钉	1
58		40128013	WASHER 5X10.5X1	垫片	2
59	*05	-----	NEEDLE HOLE GUIDE	小针板	1